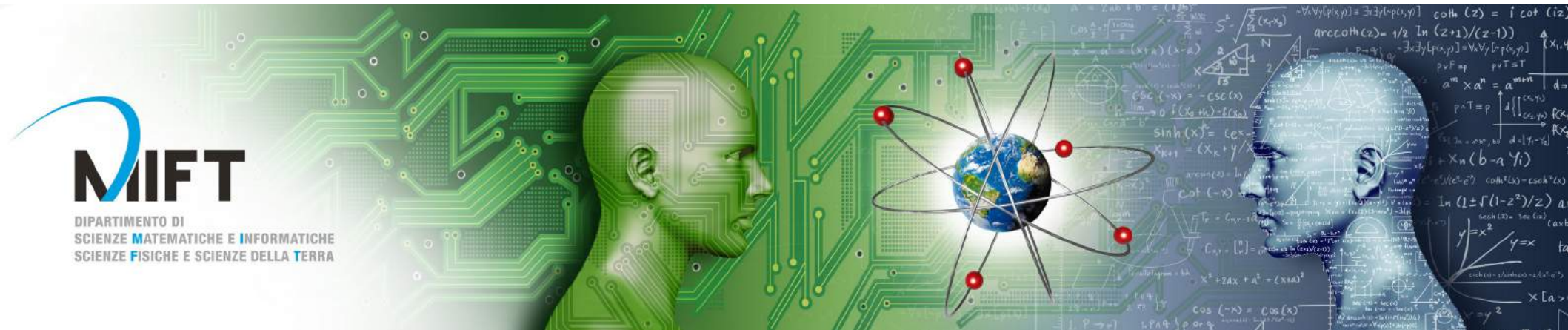




UniMe  
1548



**MIFT**

DIPARTIMENTO DI  
SCIENZE MATEMATICHE E INFORMATICHE  
SCIENZE FISICHE E SCIENZE DELLA TERRA



# Bachelor's Degree in Computer Science

# CURRICULUM TECNOLOGIE INFORMATICHE

## PIANO DI STUDI

### PRIMO ANNO

|                     |                            |
|---------------------|----------------------------|
| Matematica discreta | Fisica Mod. A              |
| Calcolo Mod. A      | Fisica Mod. B              |
| Calcolo Mod. B      | Algoritmi e strutture dati |
| Programmazione      | Lingua inglese             |
| Calcolo Numerico    |                            |

### SECONDO ANNO

|                                |                                                      |
|--------------------------------|------------------------------------------------------|
| Programmazione ad oggetti      | Basi di Dati                                         |
| Logica per l'informatica       | Basi di Dati (Mod. NoSQL)                            |
| Architettura degli elaboratori | Sistemi Operativi                                    |
| Reti di calcolatori            | Sistemi Operativi (Mod. Sistemi di virtualizzazione) |
| Disciplina da Tabella 1*       |                                                      |

#### \*Tabella 1

|                                    |                                |
|------------------------------------|--------------------------------|
| Diritto dell'informatica           | Tecnologia e innovazione       |
| Sistemi di gestione per la qualità | Statistical methods and models |
| Filosofia della Scienza            |                                |

### TERZO ANNO

|                                            |                                         |
|--------------------------------------------|-----------------------------------------|
| Programmazione Web                         | Sicurezza dei sistemi                   |
| Laboratorio di Reti e Sistemi Distribuiti  | Laboratorio di Intelligenza Artificiale |
| Laboratorio di amministrazione dei sistemi |                                         |



TECNOLOGIE  
INFORMATICHE



DATA ANALYSIS



# CURRICULUM DATA ANALYSIS



## STUDY PROGRAMME

### YEAR 1

|                               |                                |
|-------------------------------|--------------------------------|
| Calculus (Mod. A and B)       | Programming                    |
| Discrete Mathematics          | Object oriented Programming    |
| Mathematics for data analysis | Algorithms and Data Structures |
| Physics (Mod A and B)         |                                |

### YEAR 2

|                                                  |                                                 |
|--------------------------------------------------|-------------------------------------------------|
| Computer Networks                                | Device Physics                                  |
| Devices and Circuits for Artificial Intelligence | Operating Systems                               |
| Database                                         | Operating Systems (Mod. Virtualization systems) |
| Database (Mod. NoSQL)                            | Statistical methods and models                  |
| Subject from Table 2                             |                                                 |

#### \*Table 2

|                |                          |
|----------------|--------------------------|
| Data Modelling | Wireless sensor networks |
|----------------|--------------------------|

### YEAR 3

|                         |                      |
|-------------------------|----------------------|
| Web programming         | Software Engineering |
| Data mining & analytics | System Security      |
| Machine Learning        |                      |

# People



**Coordinator**  
Prof. Massimo Villari  
mvillari@unime.it



**Deputy Coordinator**  
Prof. Maria Fazio  
mfazio@unime.it



**Orientation and Tutoring  
Delegated**  
Prof. Antonio Celesti  
acelesti@unime.it

# Why Computer Science in Messina?

- **Certified Technological and Scientific Innovation**



- **Lots of National and International Research Projects**



GOFORIT

..

- **Contacts with Enterprises**



..

.

- **Possibility to do the exam for obtaining the Italian qualification to the profession of engineer – Computer Science Section**



- **Possibility to continue your studies:**
  - **Master Degree in Engineering and Computer Science**
  - **Master Degree in Data Science**
  - **PhD**
  - **Post graduation and post-doc position in research projects**



# Where Are You?



Department of  
Mathematical and Computer Sciences,  
Physical and Earth Sciences

<https://www.unime.it/it/dipartimenti/mift>



DIPARTIMENTO DI  
SCIENZE **M**ATEMATICHE E **I**NFORMATICHE  
SCIENZE **F**ISICHE E SCIENZE DELLA **T**ERRA

## DIRETTORE MIFT

### **Prof. Domenico Majolino**

Professore Ordinario (S.S.D. FIS/07 - Fisica applicata)

Tel.: +39 090 676 5030 Fax: +39 090 395004

email: [domenico.majolino@unime.it](mailto:domenico.majolino@unime.it)✉

Dipartimento di Scienze Matematiche e Informatiche, Scienze Fisiche e Scienze della Terra (MIFT)  
Università degli Studi di Messina

Viale F. Stagno d'Alcontres, 31 98166 Messina - Italy





# Campus Buildings

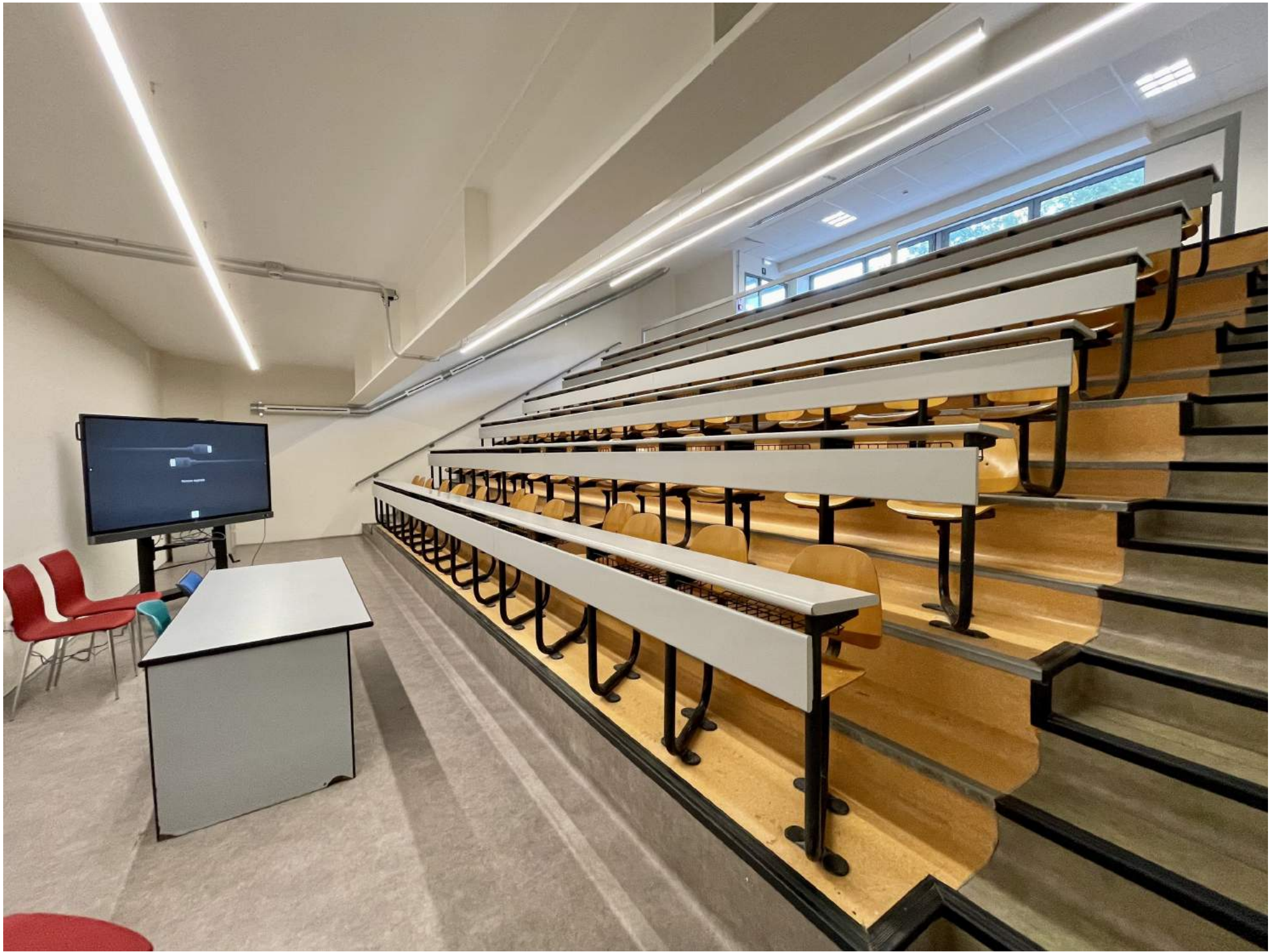




# Buildings

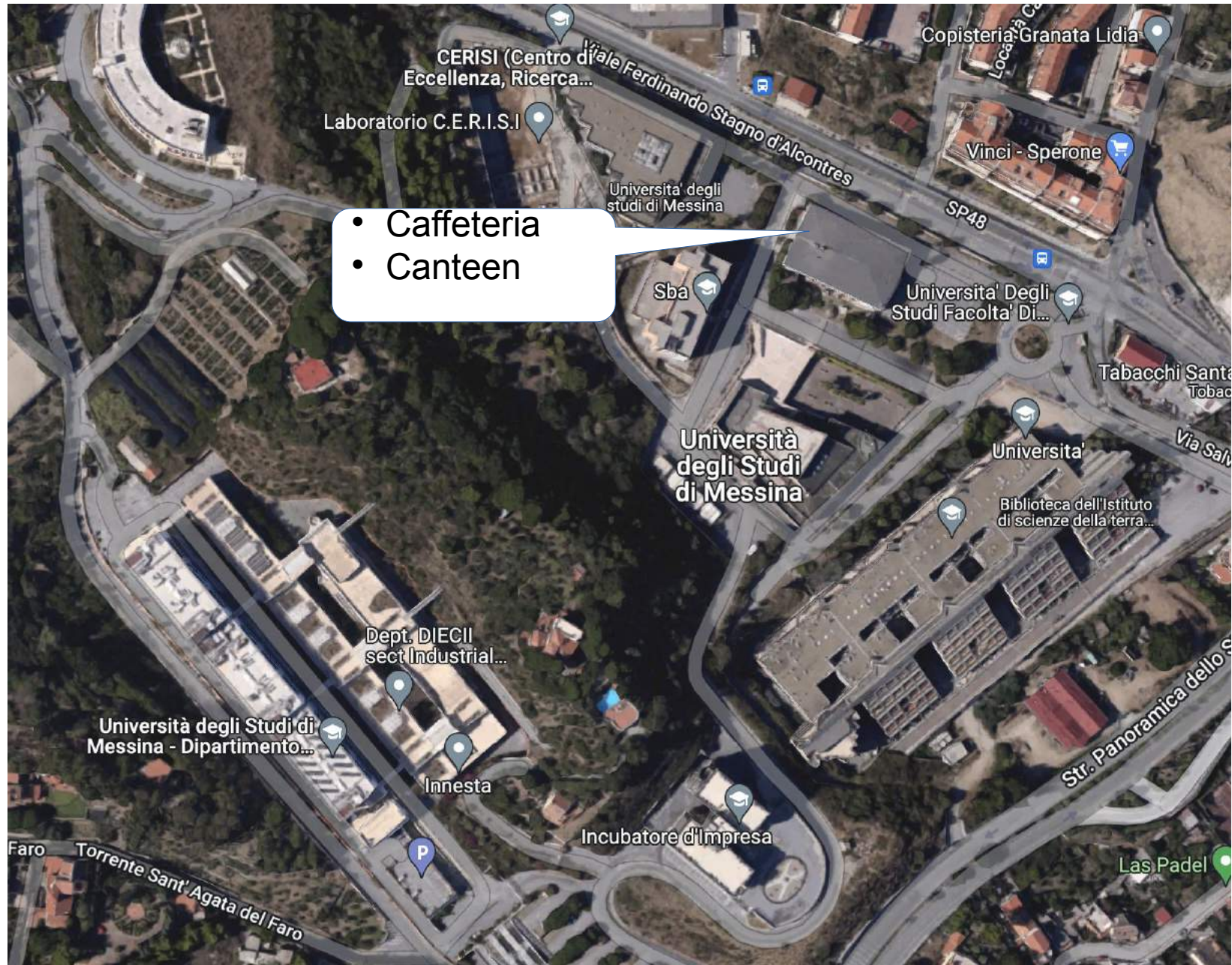








# Buildings





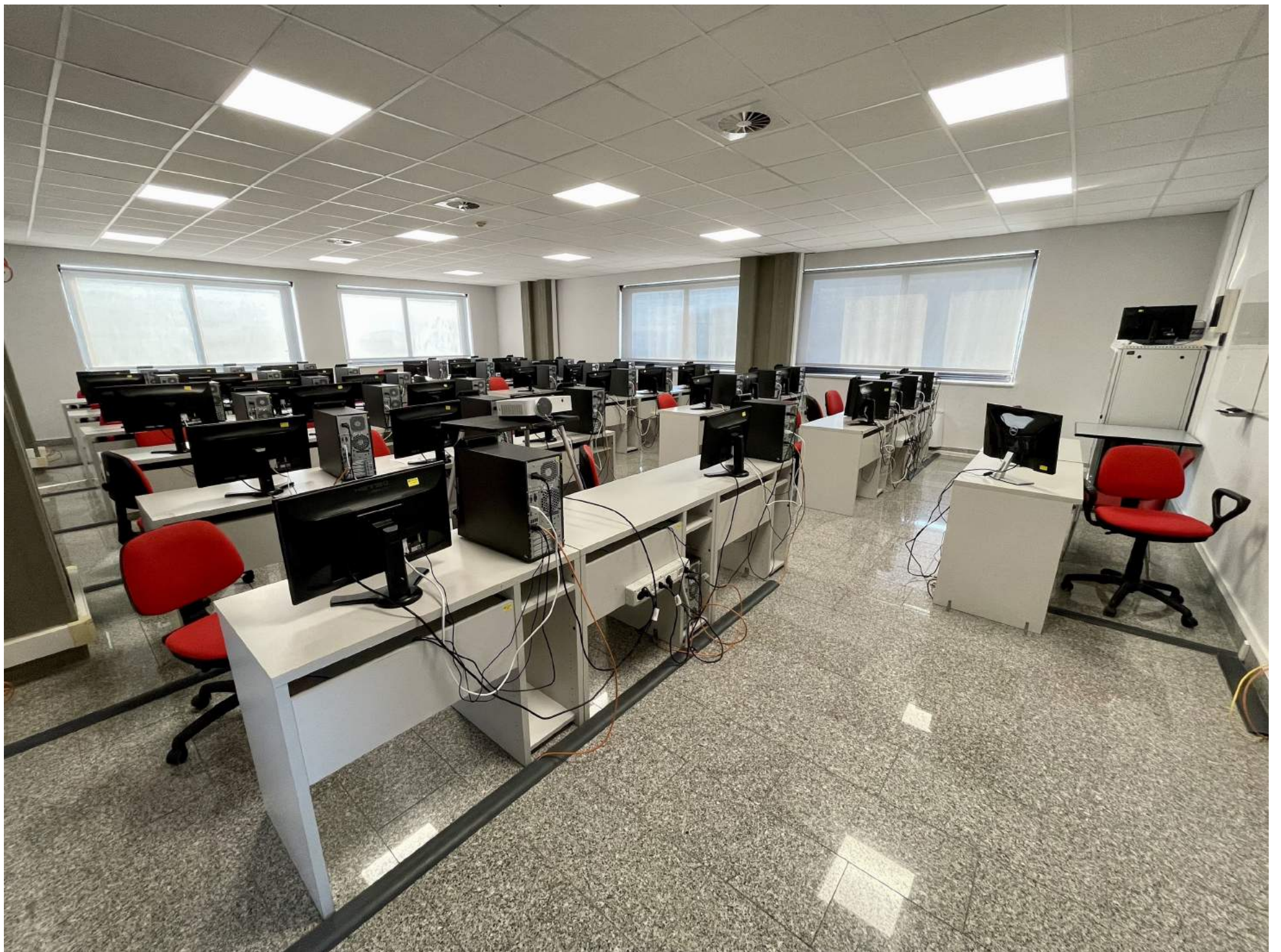
# Buildings













# Buildings

- Ex “Botanica” Building
- MIFT Teaching Secretary Offices





# Buildings

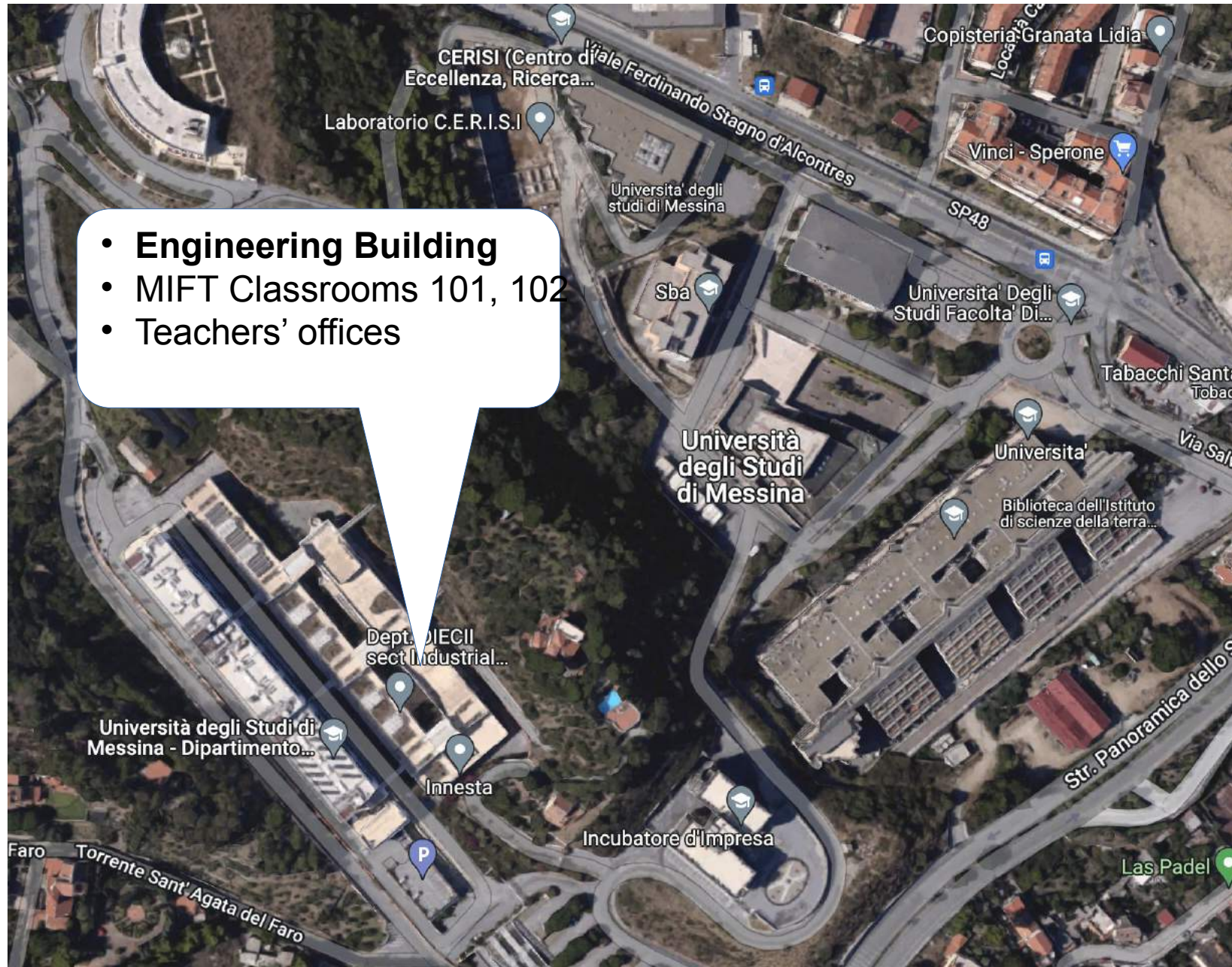








# Buildings

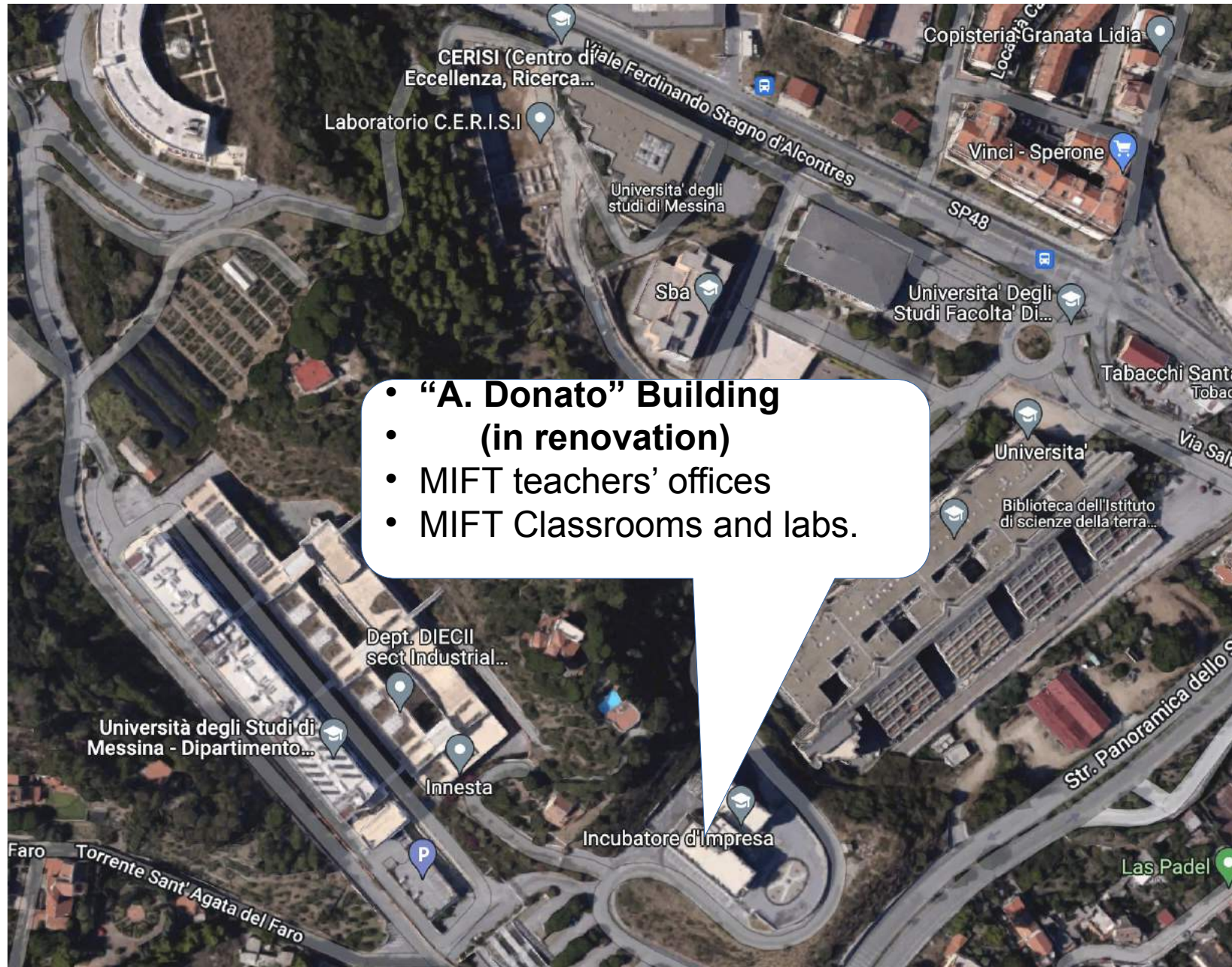








# Buildings









# Official Web Page

<https://www.unime.it/it/cds/cs-dataanalysis>



## ENROLLMENT

ready to  
enroll?

Enrollment **IMPORTANT** 

Useful Info for Foreign Students  
Entry Requirements  
Services and Facilities   
Visa and Residence Permit  
Incoming Student Guide

## INTERNATIONAL MOBILITY



## BACHELOR'S DEGREE IN COMPUTER SCIENCE - DATA ANALYSIS COURSE



Why Messina?  
Presentation  
Contacts  
Courses **Timetable**   
Exams  
Classrooms and Laboratories  
Teaching Activities 2022/23  
Brochure 2022/2023   
Teaching Regulations  
Graduation Exam Ceremony  
Bachelor's Degree in Computer Science -  
Technological Study Programme (in Italian)

## JOBS AND INTERNSHIPS OFFERS



Ascolta con ReadSpeaker 

Segui Unime su:



## In evidenza

- Classes are going to start on October 1st
- Tutoring of Programming
- Information About How to Accept New Students
- Information About How to Attend the First Semester 2021-2022 Academic Year
- Important Info About How to Attend the Second Semester Classes
- Access to Official Subjects Team and Lesson Recordings
- Webinar for Data Analysis For the First Semester Thursday November 5th, 2020

## News Didattica

- Notification of lesson timetable
- Postponement of the start of lessons for the first semester methods and models

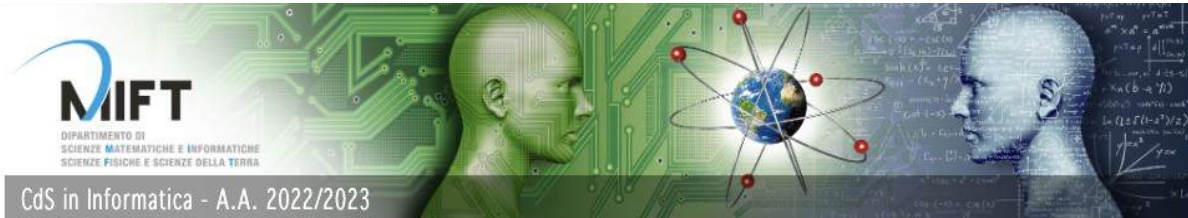
## Archivio Offerta Didattica

Seleziona l'anno accademico per il corso in archivio.

- 2013/2014

# Official Web Page

<https://www.unime.it/it/cds/informatica>



CdS in Informatica - A.A. 2022/2023

## IL CORSO DI STUDI



Insegnamenti  
Orario Lezioni  
Esami  
Aule e laboratori  
Didattica Programmata  
Regolamento Didattico  
BROCHURE   
"Data Analysis" (in Inglese) per Studenti Stranieri

## ISCRIVERSI



Servizi Web Unime ESSE3   
Segreteria studenti  
Segreteria didattica  
Test OFA

## INTERNAZIONALIZZAZIONE



Programmi di Internazionalizzazione 2017/18  
Convenzioni per il CdL in Informatica  
Erasmus Mundus EU-Mare Nostrum   
Unime/International

## TIROCINI/STAGE E OFFERTE LAVORO



Tirocini curriculari - Area Studenti  
Tirocini curriculari - Area Enti/Aziende  
Tirocini extracurriculari  
Offerte di lavoro

Ascolta con ReadSpeaker

Segui Unime su:



## In evidenza

- Avviso: rinvio esami di "LOGICA PER INFORMATICA"
- 19 Settembre - SESSIONE DI ESAMI DI IDONEITA' DI LINGUA INGLESE (ROSETTA STONE)
- Avviso: aggiornamento Seduta di Laurea II sessione Luglio 2022
- 25 MARZO - PROLUNGAMENTO A.A. 2020/21 PER I LAUREANDI DI MARZO E GIUGNO
- 17 Febbraio - Sessione di esami di Idoneità di Lingua Inglese (Rosetta Stone)
- AVVISO PER GLI STUDENTI ISCRITTI AGLI ANNI SUCCESSIVI AL PRIMO ANNO
- Le disposizioni per l'A.A. 2021/22, a partire dall'11 ottobre

## Argomenti Correlati

- Iscriviti al canale telegram di informatica
- CCdL Convocazioni con OdG
- CCdL Pratiche Studenti
- Home del Dipartimento
- EVENTI
- Modulistica studenti
- Regolamento e valutazione esame finale

## Contatti

Coordinatore: Prof. Massimo Villari   
Segreteria didattica: [didattica.mift@unime.it](mailto:didattica.mift@unime.it)

## News Didattica

- AVVISO CORSO PES: "D.Lgs 81/2008 E SICUREZZA NEI LABORATORI" A.A. 2021/2022
- Comunicazione: Aggiornamento orario lezioni II semestre
- Comunicazione: Aggiornamento orario lezioni II semestre

**ORACLE ACADEMY**  
Department MIFT  
University of Messina  
*Member Institution*

**ORACLE ACADEMY**

Corsi completi e gratuiti in database design SQL PL/SQL e programmazione orientata agli oggetti e Java

**Telegram**

**INFORMATICA BOTME**

Unisciti al canale telegram per avere in anteprima le news del CdS di Informatica



# Social Channels



Through smartphone look for and join the channel:  
**Informatica botME.**

**facebook**

Official page

<https://www.facebook.com/cdsinformaticaunime>



# e-Learning Platform

<https://moodle2.unime.it/>

## Database Data Analysis 2021-2022

[Dashboard](#) / [I miei corsi](#) / [AA\\_2021\\_2022](#) / [Scienze matematiche e informatiche, scienze fisiche e scienze della terra](#) / [Corsi di laurea di primo li](#)  
/ [Database Data Analysis 2021-2022](#)

 [Annunci](#)

### Module A (RDBMS)

 [Slides Module Database \(RDBM\) - first semester](#)

### Module B (NoSQL) 01 - Distributed Systems Foundations

 [Distributed system introduction](#)

 [Distributed architectures](#)

 [Cloud computing overview](#)

### Module B (NoSQL) - OODBMS vs. ORDBMS

 [OODBMS vs. OR DBMS](#)

### Module B (NoSQL) - Oracle and PL/SQL

 [Official Oracle download page](#)

 [Tutorial on how to install an Oracle Linux Virtual Machine](#)

This tutorial is valid for any Operating System. The Oracle VM includes the whole Oracle framework (e.g., Oracle DB, SQL plus, SQL





# Microsoft Teams

<https://teams.microsoft.com/>

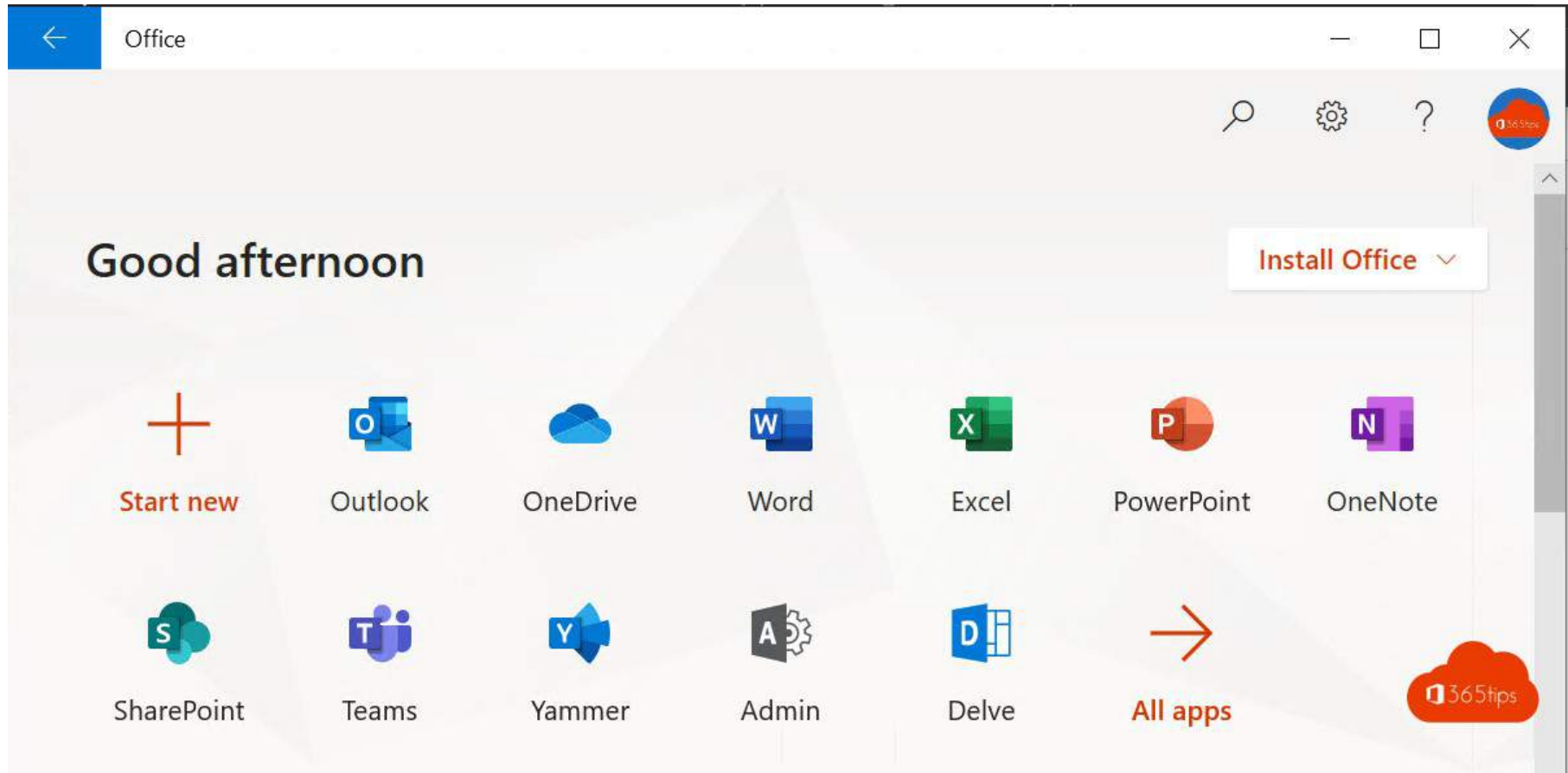


- Reception of students (optional, we prefer in person!!!), sharing of teaching materials.
- Virtual classes until December 31st, only for students who have been waiting for VISA.





# Microsoft One Drive





# And Many Other Services...

<https://www.unime.it/it>



Università  
degli Studi di  
Messina



EMAIL RUBRICA DIPARTIMENTI



EN

Personale Enti e Imprese UniVersoMe

ATENEODIDATTICARICERCA TERZA MISSIONE INTERNATIONAL

Futuri Studenti Studenti Laureati Alumni



< **Corsi di Alta  
Formazione  
Master di I e II livello**

OFFERTA FORMATIVA 2022/23

L'offerta 2022/2023 dei Corsi di Alta Formazione UniMe

vai a  
**UNIME**  
informa



# Your Dashboard



Esci



Ciao **Antonio Celesti**

Ricercatore a tempo determinato

[i tuoi accessi](#)

Scadenza account:  
03-04-2024

## SERVIZI UNIME



Teams  
Teledidattica



Recupero  
frequenze



Teams  
Biblioteche



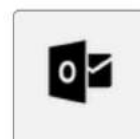
Recupero frequenze



Accesso a  
Matlab



Rassegna  
Stampa



Webmail



Servizi Web  
esse3



Istanze



I tuoi ticket



Operatore  
Portale Web



Protocollo



UniPerformance



Recon



Elearning



IRIS Ricerca



Cedolini, CUD,  
Certificati



U-GOV  
contabilità



uBUDGET



IrisCloud



IrisWEB



IrisAPP



Edicola digitale



GAIA



U-GOV  
Didattica



CISCO Self  
Care



U-Sign Firma  
Digitale



Cineca  
Customer  
Portal



# And more and more...

<https://international.unime.it/>

The screenshot shows the top navigation bar of the website with the following items: University, Study with us, Research, Services and facilities, and Living in Messina. The 'Services and facilities' menu is open, displaying a list of services. Below the navigation bar are three promotional banners: 'STUDY COURSES IN ENGLISH' featuring a student in a graduation cap and a UK flag icon; 'STUDY COURSES' featuring a student in a graduation cap and a graduation cap icon; and 'LIFE IN MESSINA' featuring a cruise ship in a harbor and a location pin icon. The 'STUDENT' logo is visible in the bottom right corner.

University ▾ Study with us ▾ Research ▾ Services and facilities ▾ Living in Messina ▾

- Welcome Point
- Welcome Office
- Student Ambassador Program
- Student Facilities Unit
- Learning Italian
- Library
- Sport
- Transport
- Disability/SLD Services for Students
- Marco Polo project
- Wi-Fi
- Canteens
- Housing

**STUDY COURSES IN ENGLISH**  
Unime

**STUDY COURSES**  
Unime

**LIFE IN MESSINA**  
Unime

**STUDENT**

# First Semester Academic Calendar

## October

| OTTOBRE 2022 |   |                                    |
|--------------|---|------------------------------------|
| 1            | S | -                                  |
| 2            | D | -                                  |
| 3            | L | LEZ. I SEM.                        |
| 4            | M | LEZ. I SEM.                        |
| 5            | M | LEZ. I SEM.                        |
| 6            | G | LEZ. I SEM.                        |
| 7            | V | LEZ. I SEM.                        |
| 8            | S | -                                  |
| 9            | D | -                                  |
| 10           | L | LEZ. I SEM. APP. LAUREE a.a. 21/22 |
| 11           | M | LEZ. I SEM. APP. LAUREE a.a. 21/22 |
| 12           | M | LEZ. I SEM. APP. LAUREE a.a. 21/22 |
| 13           | G | LEZ. I SEM. APP. LAUREE a.a. 21/22 |
| 14           | V | LEZ. I SEM. APP. LAUREE a.a. 21/22 |
| 15           | S | -                                  |
| 16           | D | -                                  |
| 17           | L | LEZ. I SEM.                        |
| 18           | M | LEZ. I SEM.                        |
| 19           | M | LEZ. I SEM.                        |
| 20           | G | LEZ. I SEM.                        |
| 21           | V | LEZ. I SEM.                        |
| 22           | S | -                                  |
| 23           | D | -                                  |
| 24           | L | LEZ. I SEM.                        |
| 25           | M | LEZ. I SEM.                        |
| 26           | M | LEZ. I SEM.                        |
| 27           | G | LEZ. I SEM.                        |
| 28           | V | LEZ. I SEM.                        |
| 29           | S | -                                  |
| 30           | D | -                                  |
| 31           | L | LEZ. I SEM.                        |

## November

| NOVEMBRE 2022 |   |                     |
|---------------|---|---------------------|
| 1             | M | -                   |
| 2             | M | LEZ. I SEM.         |
| 3             | G | LEZ. I SEM.         |
| 4             | V | LEZ. I SEM.         |
| 5             | S | -                   |
| 6             | D | -                   |
| 7             | L | LEZ. I SEM.         |
| 8             | M | LEZ. I SEM.         |
| 9             | M | LEZ. I SEM.         |
| 10            | G | LEZ. I SEM.         |
| 11            | V | LEZ. I SEM.         |
| 12            | S | -                   |
| 13            | D | -                   |
| 14            | L | LEZ. I SEM.         |
| 15            | M | LEZ. I SEM.         |
| 16            | M | LEZ. I SEM.         |
| 17            | G | LEZ. I SEM.         |
| 18            | V | LEZ. I SEM.         |
| 19            | S | -                   |
| 20            | D | -                   |
| 21            | L | IV SESS. a.a. 21/22 |
| 22            | M | IV SESS. a.a. 21/22 |
| 23            | M | IV SESS. a.a. 21/22 |
| 24            | G | IV SESS. a.a. 21/22 |
| 25            | V | IV SESS. a.a. 21/22 |
| 26            | S | -                   |
| 27            | D | -                   |
| 28            | L | LEZ. I SEM.         |
| 29            | M | LEZ. I SEM.         |
| 30            | M | LEZ. I SEM.         |

## December

| DICEMBRE 2022 |   |                                    |
|---------------|---|------------------------------------|
| 1             | G | LEZ. I SEM.                        |
| 2             | V | LEZ. I SEM.                        |
| 3             | S | -                                  |
| 4             | D | -                                  |
| 5             | L | LEZ. I SEM.                        |
| 6             | M | LEZ. I SEM.                        |
| 7             | M | LEZ. I SEM.                        |
| 8             | G | -                                  |
| 9             | V | LEZ. I SEM.                        |
| 10            | S | -                                  |
| 11            | D | -                                  |
| 12            | L | LEZ. I SEM. APP. LAUREE a.a. 21/22 |
| 13            | M | LEZ. I SEM. APP. LAUREE a.a. 21/22 |
| 14            | M | LEZ. I SEM. APP. LAUREE a.a. 21/22 |
| 15            | G | LEZ. I SEM. APP. LAUREE a.a. 21/22 |
| 16            | V | LEZ. I SEM. APP. LAUREE a.a. 21/22 |
| 17            | S | -                                  |
| 18            | D | -                                  |
| 19            | L | LEZ. I SEM.                        |
| 20            | M | LEZ. I SEM.                        |
| 21            | M | LEZ. I SEM.                        |
| 22            | G | LEZ. I SEM.                        |
| 23            | V | LEZ. I SEM.                        |
| 24            | S | -                                  |
| 25            | D | -                                  |
| 26            | L | -                                  |
| 27            | M | -                                  |
| 28            | M | -                                  |
| 29            | G | -                                  |
| 30            | V | -                                  |
| 31            | S | -                                  |

## January

| GENNAIO 2023 |   |             |
|--------------|---|-------------|
| 1            | D | -           |
| 2            | L | -           |
| 3            | M | -           |
| 4            | M | -           |
| 5            | G | -           |
| 6            | V | -           |
| 7            | S | -           |
| 8            | D | -           |
| 9            | L | LEZ. I SEM. |
| 10           | M | LEZ. I SEM. |
| 11           | M | LEZ. I SEM. |
| 12           | G | LEZ. I SEM. |
| 13           | V | LEZ. I SEM. |
| 14           | S | -           |
| 15           | D | -           |
| 16           | L | I SESS.     |
| 17           | M | I SESS.     |
| 18           | M | I SESS.     |
| 19           | G | I SESS.     |
| 20           | V | I SESS.     |
| 21           | S | -           |
| 22           | D | -           |
| 23           | L | I SESS.     |
| 24           | M | I SESS.     |
| 25           | M | I SESS.     |
| 26           | G | I SESS.     |
| 27           | V | I SESS.     |
| 28           | S | -           |
| 29           | D | -           |
| 30           | L | I SESS.     |
| 31           | M | I SESS.     |

## February

| FEBBRAIO 2023 |   |              |
|---------------|---|--------------|
| 1             | M | I SESS.      |
| 2             | G | I SESS.      |
| 3             | V | I SESS.      |
| 4             | S | -            |
| 5             | D | -            |
| 6             | L | I SESS.      |
| 7             | M | I SESS.      |
| 8             | M | I SESS.      |
| 9             | G | I SESS.      |
| 10            | V | I SESS.      |
| 11            | S | -            |
| 12            | D | -            |
| 13            | L | I SESS.      |
| 14            | M | I SESS.      |
| 15            | M | I SESS.      |
| 16            | G | I SESS.      |
| 17            | V | I SESS.      |
| 18            | S | -            |
| 19            | D | -            |
| 20            | L | I SESS.      |
| 21            | M | I SESS.      |
| 22            | M | I SESS.      |
| 23            | G | I SESS.      |
| 24            | V | I SESS.      |
| 25            | S | -            |
| 26            | D | -            |
| 27            | L | LEZ. II SEM. |
| 28            | M | LEZ. II SEM. |

- Lesson
- Exam
- Final Degree session

Available in web site of the MIFT Department



# How to Book Exams

<https://unime.esse3.cineca.it/>



UNIVERSITÀ DEGLI STUDI  
DI MESSINA



Home Login

Home page

## Unime ESSE3 Web Services

Welcome to the web portal dedicated to Esse3 Services for Students and Professors.  
To access or browse the information in the public area, click on the menu at the top.

---

**PLEASE NOTE:** starting from 28 February 2021, adult citizens who access online services must only use [SPID](#) for the purpose of their identification. Therefore, it is necessary to use [SPID](#) to access the online services, in order to enroll in one of the courses offered by the University.

**In case you do not have SPID, login without SPID for minors and foreign students is temporarily allowed.**

---

### Access to new users:

- If you are adult: [Register with SPID](#)
- If you are minor or foreign student: [Register](#)
- If you are a freelancer or an enterprise: [go to the portal of economic operators](#)

---

**Access for International Mobility:** [Authorization code from Access Code](#)

---

### Notice to the professors:

Professors do not have to Register here: to request a new account @unime.it, please contact the page of [Gestione Accessi Integrata di Ateneo \(G.A](#)

# Academic Tutor

- A Professor who provides assistance for didactical issues.
- Assigned to each student for the whole degree course.
- Wait for the closure of the enrolment process.



# Contacts

For any general administrative questions (e.g., enrollment, VISA, taxes, accommodation, transportation, etc.), please contact **foreignstudents@unime.it**

For any general teaching questions (e.g., how to attend a class, how to book an exam, online and presence classes, etc.), please contact **info.data-analysis@unime.it**

For any specific questions about a class of the first semester (e.g., how to download e-learning material, video lessons, etc.), please contact the corresponding teacher. To look for a teacher use **<https://rubrica.unime.it/>** typing his/her name and surname. Ex.

Rubrica Unime

Antonio Celesti

**[Dott. Celesti Antonio](#)**

Ricercatori Legge 240/10 - t.det.

 [090 6768577](tel:0906768577)

 [antonio.celesti@unime.it](mailto:antonio.celesti@unime.it)

 Struttura: [Dipartimento di Scienze matematiche e informatiche, scienze fisiche e scienze della terra](#)

# Suggestions

During theoretical lessons **CLOSE** your laptop and use **pen and a squared notebook** for making notes!



Use the PC only during practical and/or laboratory lessons.



# Suggestions

- Foreign students can optionally learn the Italian language to facilitate your integration in Italy
  - It will be useful for internships and to find job in Italy!

<https://unimestone.unime.it/>



Login

For further info on UniME services for students...



UniMe  
1548

# welcome Day

**5 Ottobre 2022**  
**Cortile Rettorato**

Ore 16:00 Scalinata Rettorato Cerimonia inaugurale e saluti istituzionali

Prof. Salvatore Cuzzocrea, Rettore dell'Università degli Studi di Messina

Prof. Antonino Germanà, Prorettore Internazionalizzazione

Prof.ssa Candida Milone, Prorettore alla Didattica

Prof.ssa Roberta Salomone, Prorettore ai Servizi agli studenti

Prof.ssa Pina Filippello, Delegata rettoriale all'orientamento

Ore 16:30-18:00 Aula ex-Chimica

Welcome address to international students

Ore 16:30-19:00 Servizi d'Ateneo

Desk espositivi delle Strutture universitarie per info su opportunità e sui servizi offerti

Ore 19:00 -23:00 Piazza dell'Arte

Spazio artistico e musicale a cura delle Associazioni studentesche di UNIME

DJ set e Gruppi Musicali

**#discoverunime**





# **Welcome Day**

To be announced in the mid of October



Enjoy UniMe and  
1548

