



Università degli Studi di Messina

CAPITOLATO SPECIALE D'APPALTO

**AFFIDAMENTO IN CONCESSIONE DEL SERVIZIO DI DISTRIBUZIONE AUTOMATICA
DI BEVANDE E ALIMENTI PRECONFEZIONATI PRESSO LE STRUTTURE
DELL'ATENEO, PER LA DURATA DI ANNI TRE.**

CIG 71558000F8

ALLEGATO A

Elenco sedi e distributori

POLO CENTRALE

	STRUTTURA	N. distrib. bevande calde	N. distrib. bevande fredde	N. distrib. misti bevande/s nack freddi	N. distrib. snack freddi	N. distrib. totali
1	Palazzo Mariani	1	1		1	3
2	Ex Statistiche	1	1		1	3
3	Ex Magistero	1		1		2
4	Ex Igiene e Fisiologia umana	1		1		2
5	Ex Medicina Legale	1	1		1	3
6	Ex Economia	2		2		4
7	Ex Patologia	1		1		2
8	Ex Anatomia	1	1		1	3
9	Giurisprudenza	1	1		1	3
10	Ex Farmacologia e microbiologia	1		1		2
11	Diritto Privato	1		1		2
12	Policlinico - Palazzo Congressi	1	1		1	3
13	Policlinico - Polo Didattico	1	1		1	3
	Totale distributori	14	7	7	7	35

POLO ANNUNZIATA

	STRUTTURA	N. distrib. bevande calde	N. distrib. bevande fredde	N. distrib. misti bevande/s nack freddi	N. distrib. snack freddi	N. Distrib.
1	SCIFAR	1	1		1	3
2	Dipartimento Veterinaria	1		1		2
3	Ospedale Veterinario	1	1		1	3
	Totale distributori	3	2	1	2	8

POLO PAPARDO

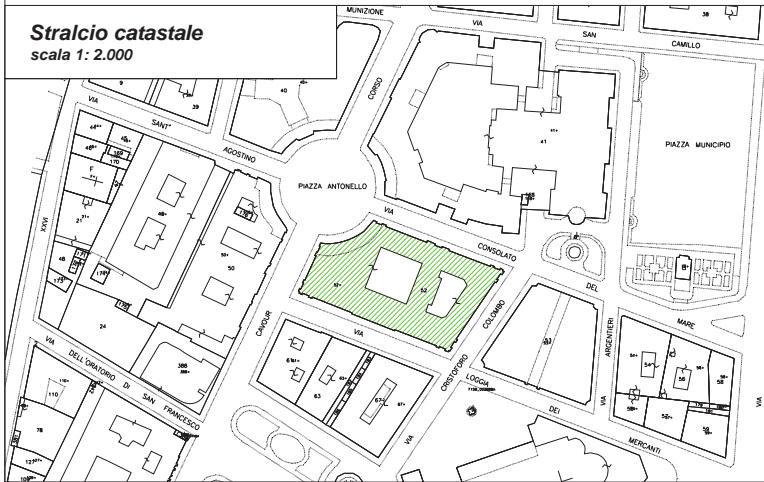
	STRUTTURA	N. distrib. bevande calde	N. distrib. bevande fredde	N. distrib. misti bevande/s nack freddi	N. distrib. snack freddi	N. Distrib.
1	Biblioteca Centralizzata	1	1		1	3
2	Ex Parco Scientifico	1	1		1	3
3	Villa Pace - palazzina B2	1	1		1	3
	Totale distributori	3	3	0	3	9

Individuazione planimetrica delle aree

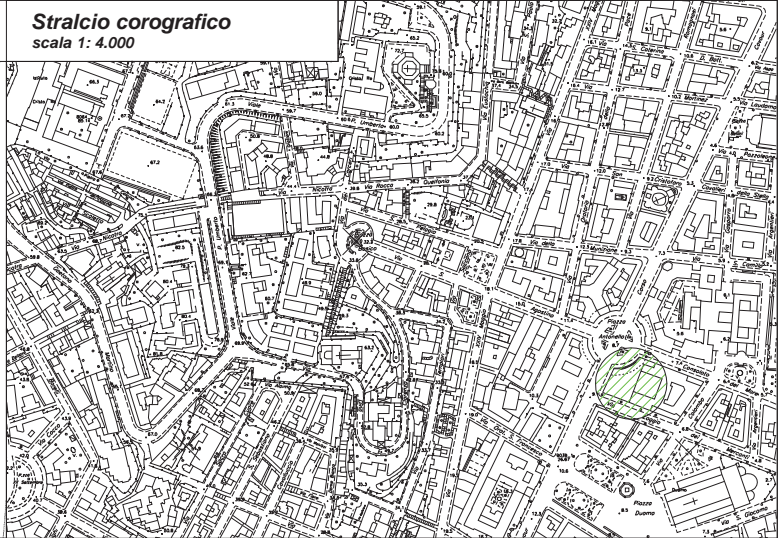
POLO CENTRALE

Palazzo Mariani - piazza Antonello

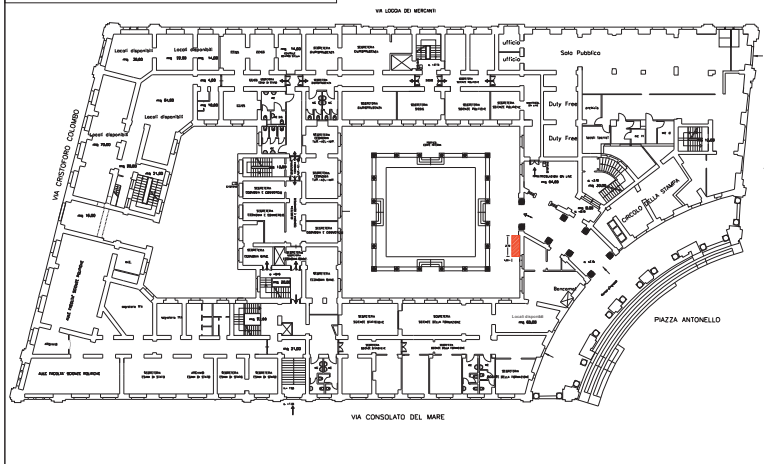
Stralcio catastale
scala 1: 2.000



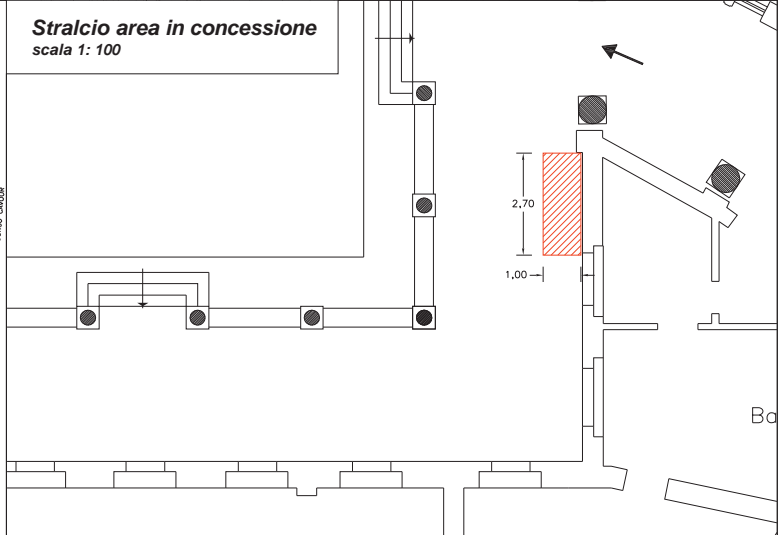
Stralcio corografico
scala 1: 4.000



Pianta piano rialzato
fuori scala

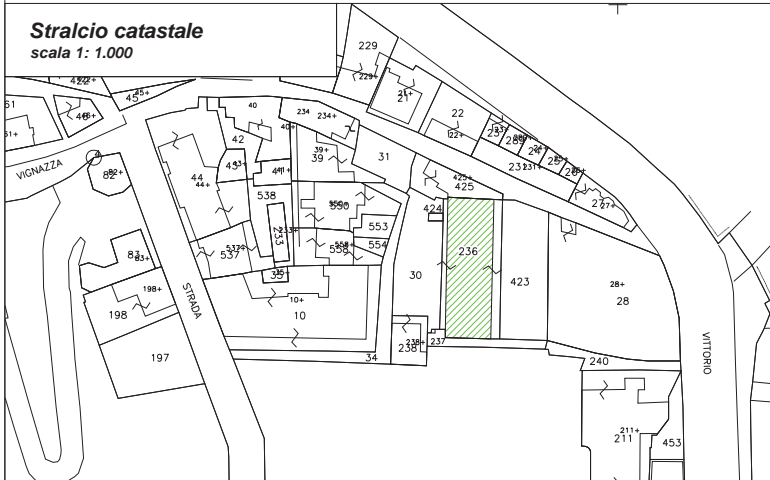


Stralcio area in concessione
scala 1: 100

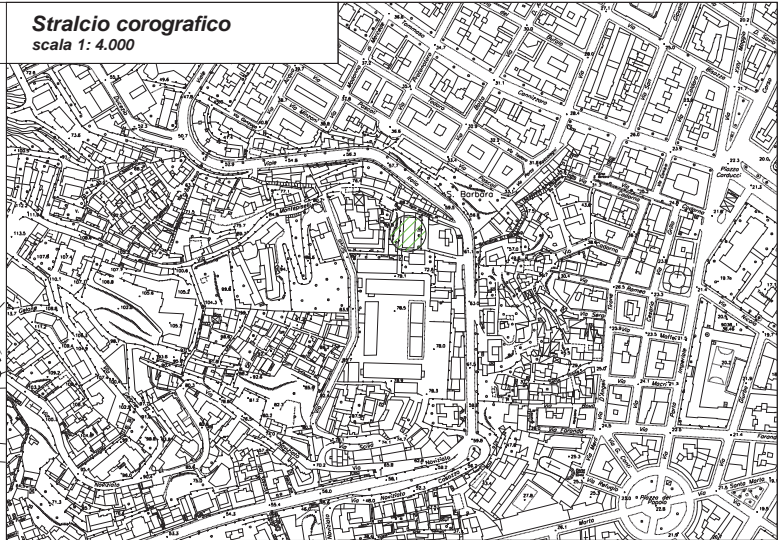


Ex Istituto di Scienze Statistiche - viale Italia

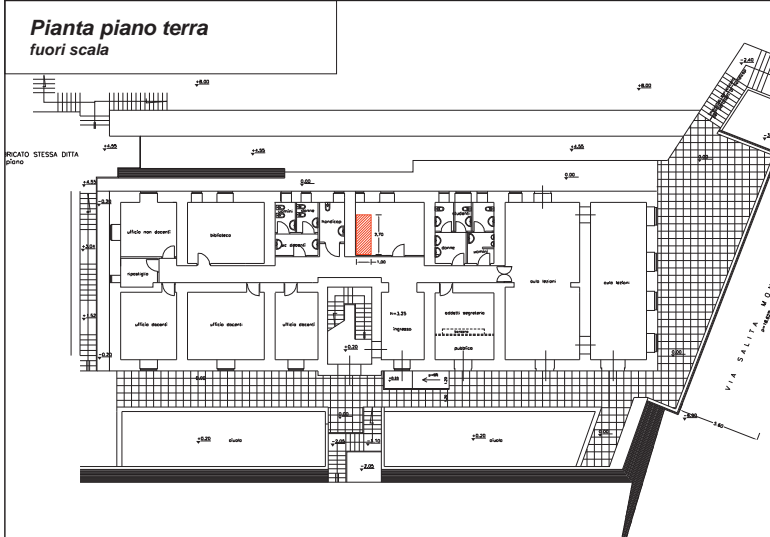
Stralcio catastale
scala 1: 1.000



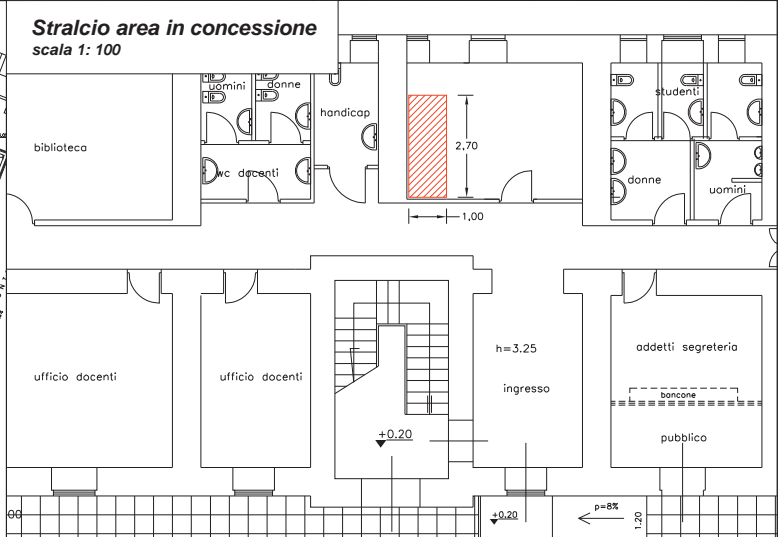
Stralcio corografico
scala 1: 4.000



Pianta piano terra
fuori scala

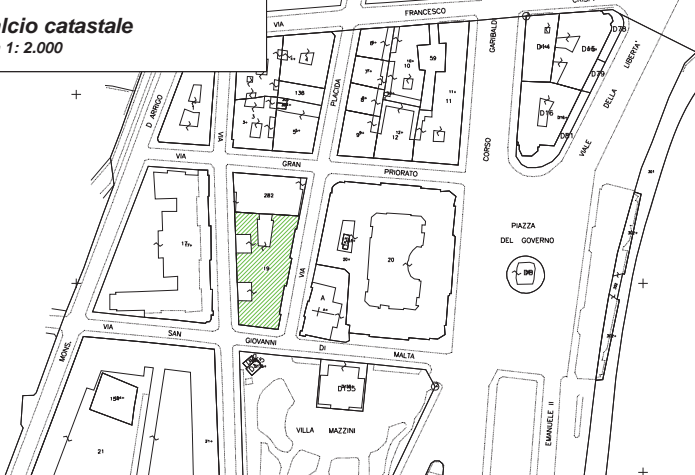


Stralcio area in concessione
scala 1: 100



Ex Magistero - via Concezione

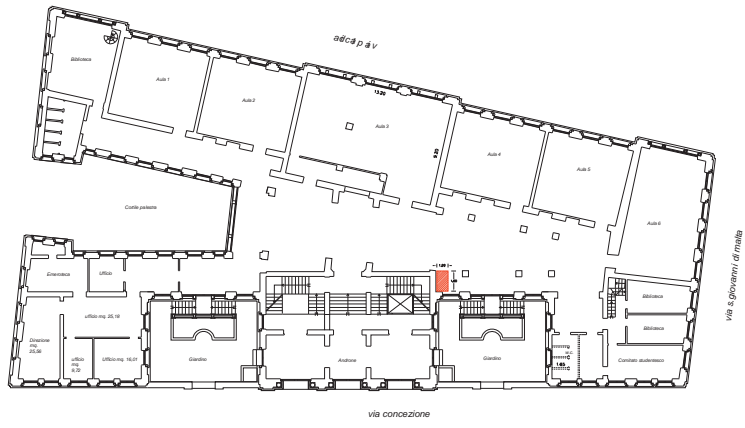
Stralcio catastale
scala 1: 2.000



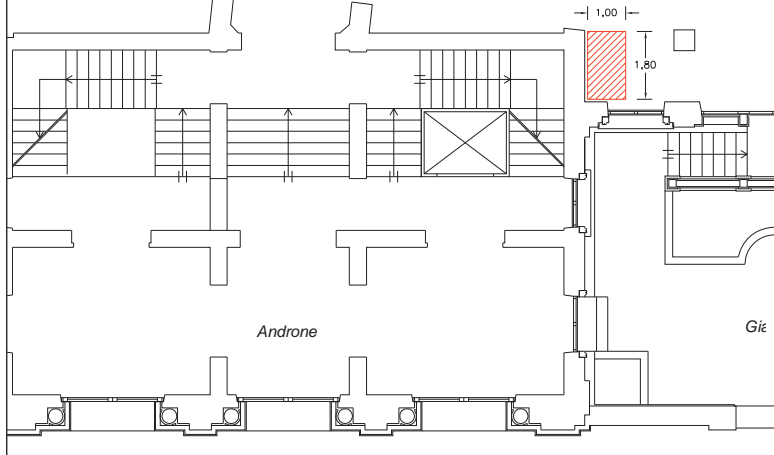
Stralcio corografico
scala 1: 4.000



Pianta piano terra
fuori scala

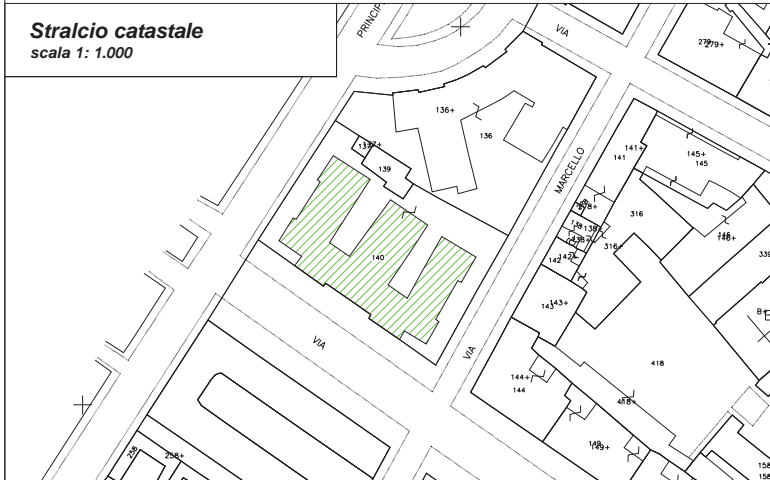


Stralcio area in concessione
scala 1: 100

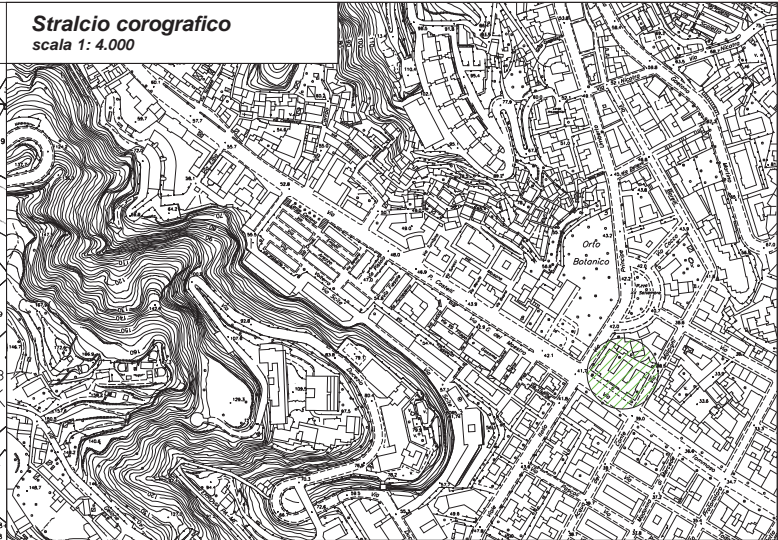


Ex Istituto di Igiene - via Tommaso Cannizzaro

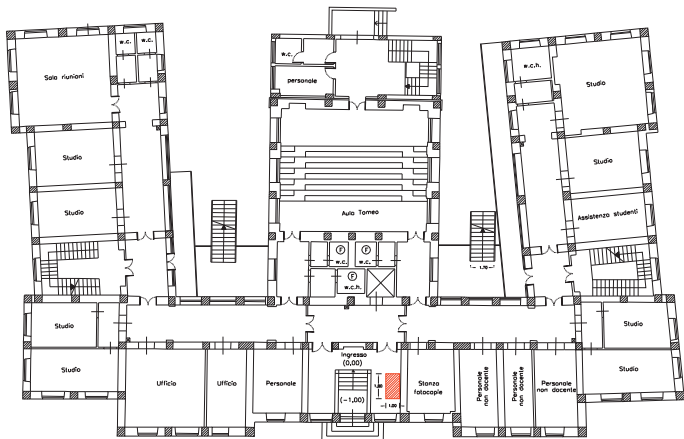
Stralcio catastale
scala 1: 1.000



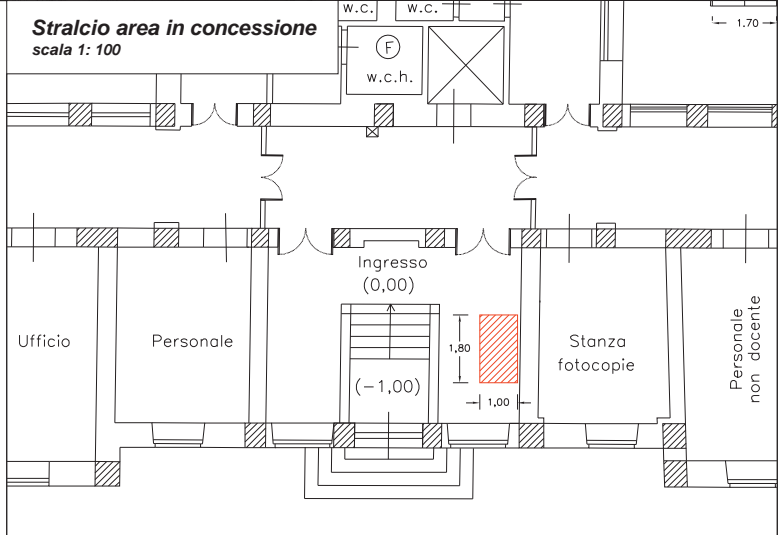
Stralcio corografico
scala 1: 4.000



Pianta piano terra
fuori scala

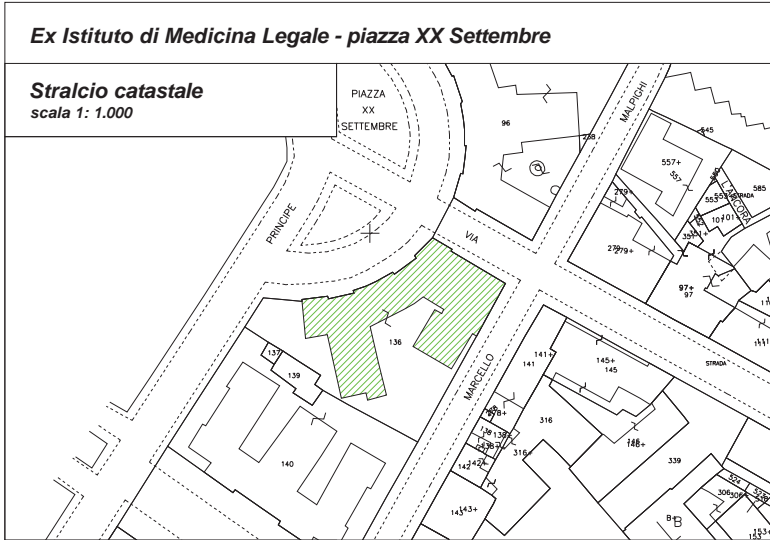


Stralcio area in concessione
scala 1: 100

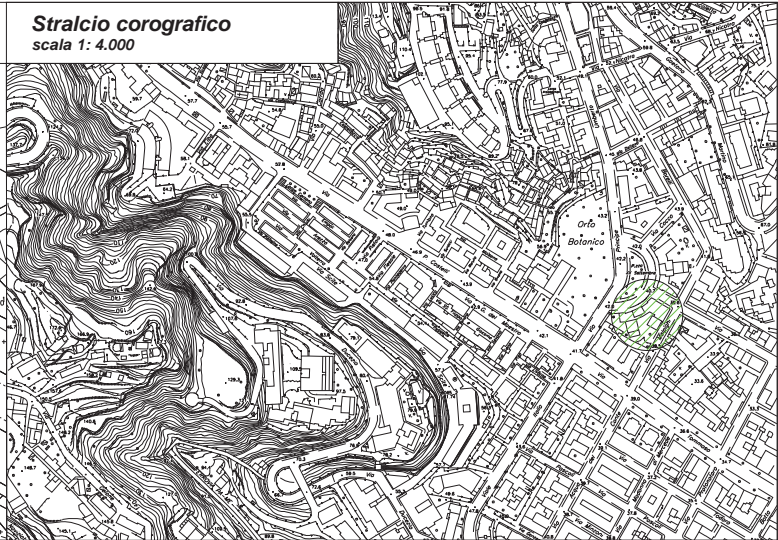


Ex Istituto di Medicina Legale - piazza XX Settembre

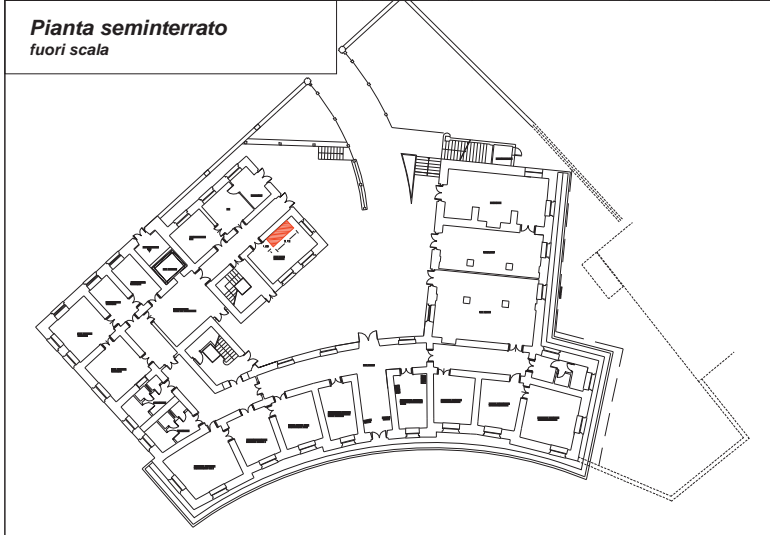
Stralcio catastale
scala 1: 1.000



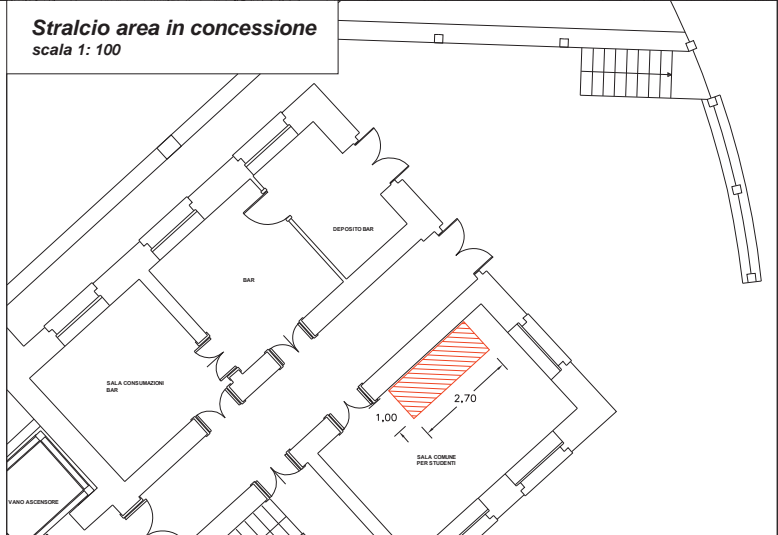
Stralcio corografico
scala 1: 4.000



Pianta seminterrato
fuori scala

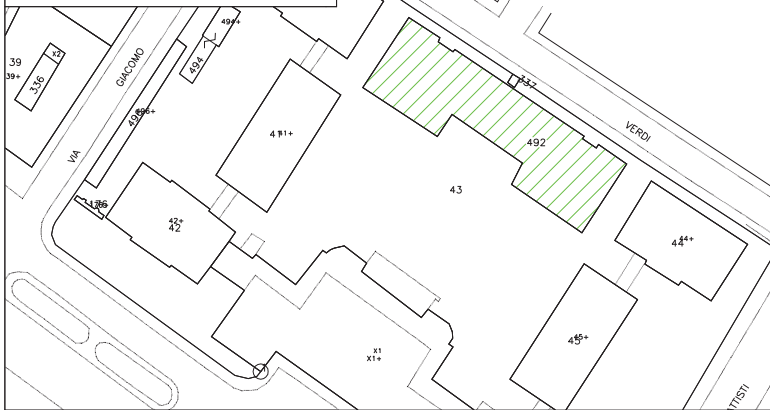


Stralcio area in concessione
scala 1: 100

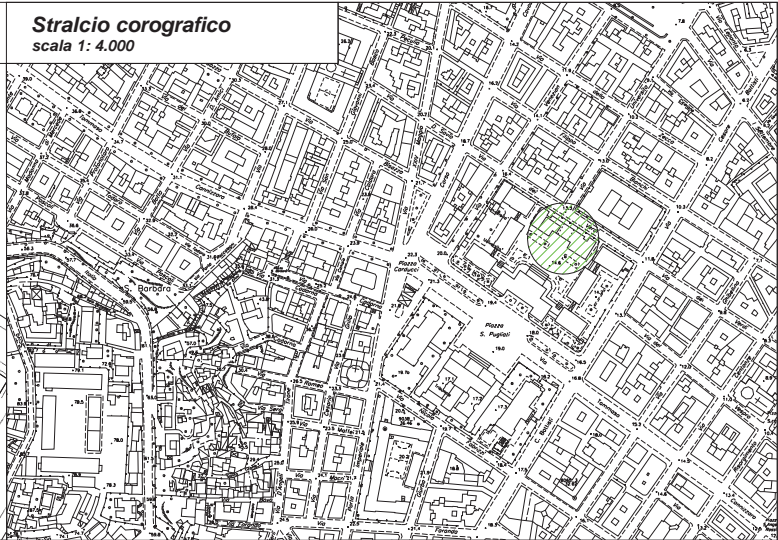


Ex Facoltà di Economia - via dei Verdi

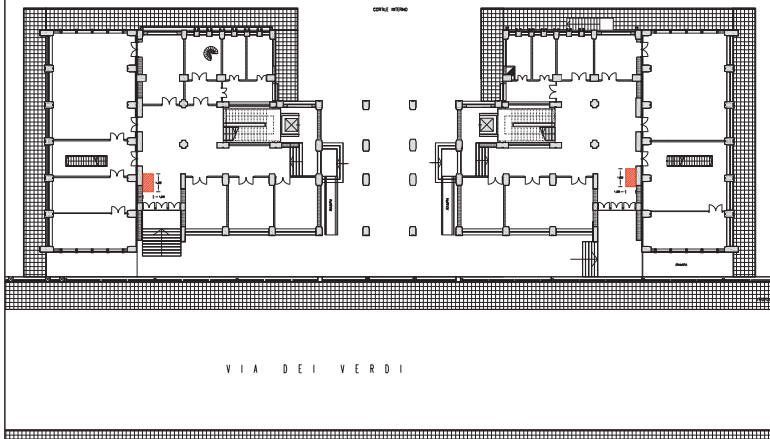
Stralcio catastale
scala 1: 1.000



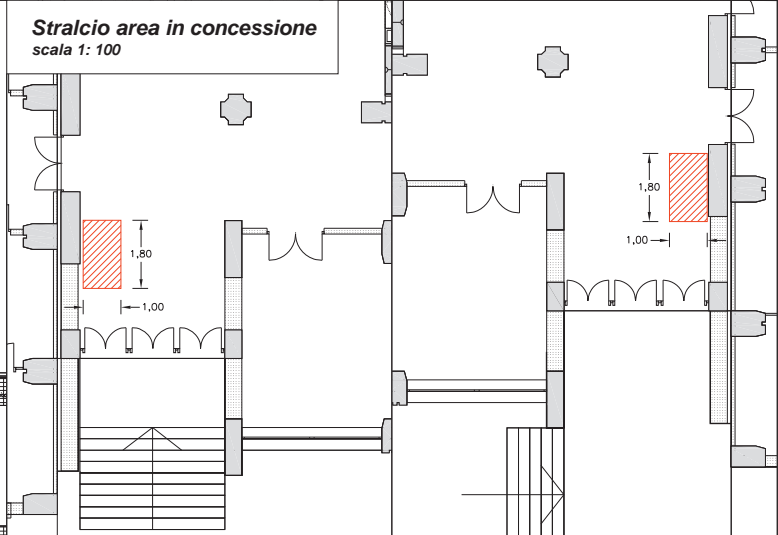
Stralcio corografico
scala 1: 4.000



Pianta piano rialzato
fuori scala

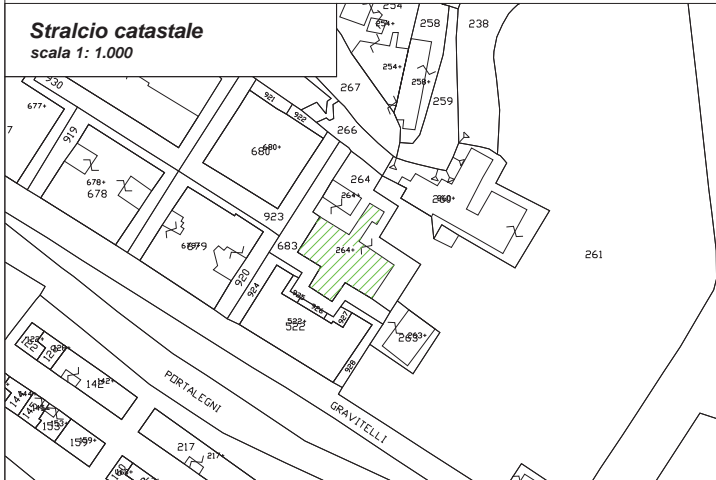


Stralcio area in concessione
scala 1: 100

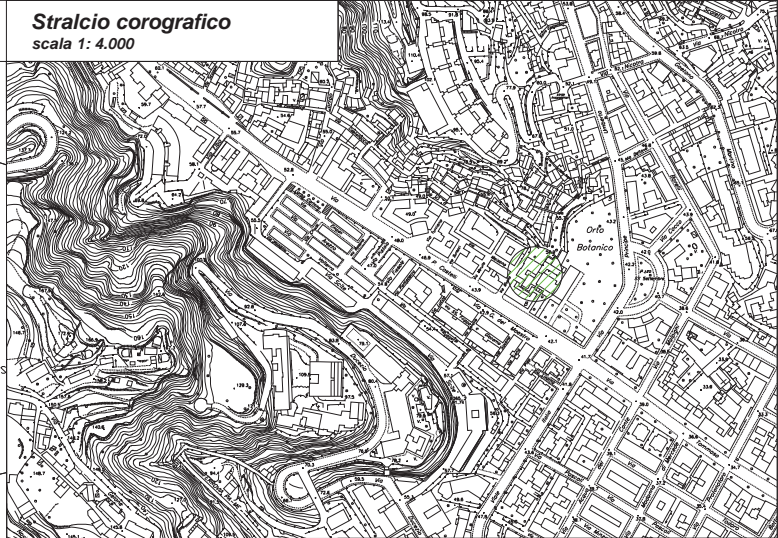


Ex Istituto di Patologia - via Lorenzo Maisano

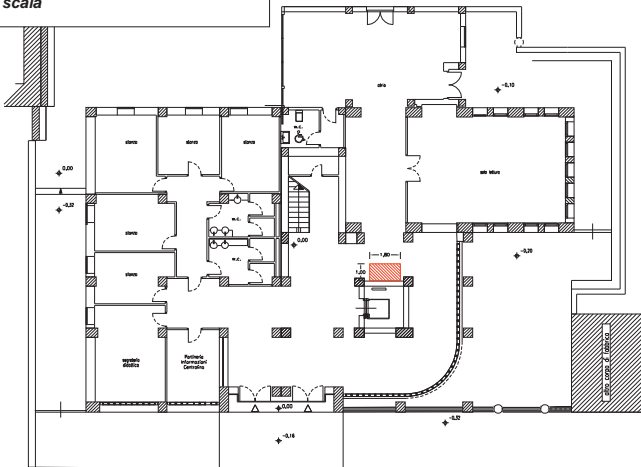
Stralcio catastale
scala 1: 1.000



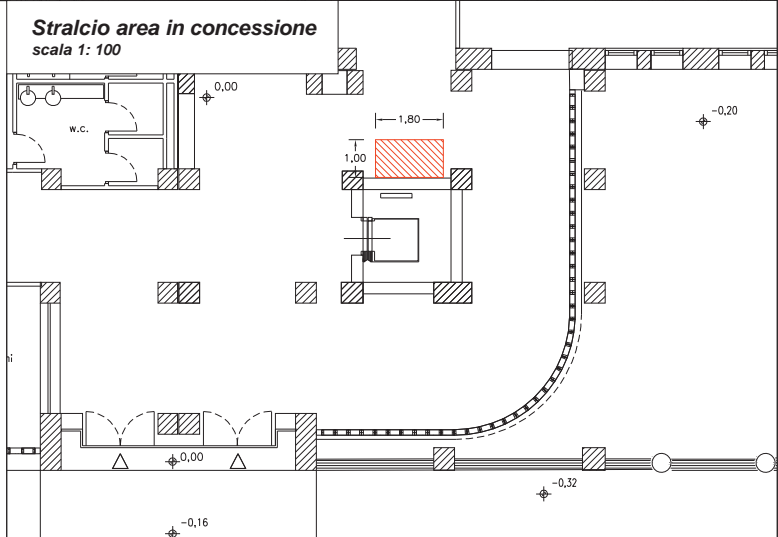
Stralcio corografico
scala 1: 4.000



Pianta piano terra
fuori scala

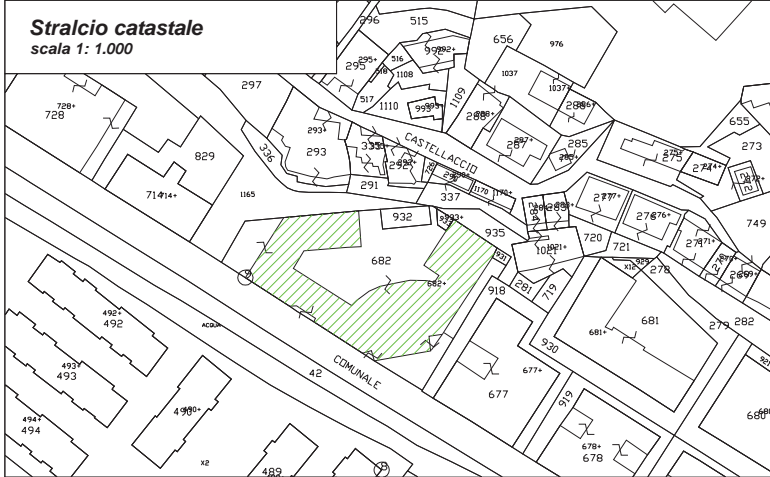


Stralcio area in concessione
scala 1: 100

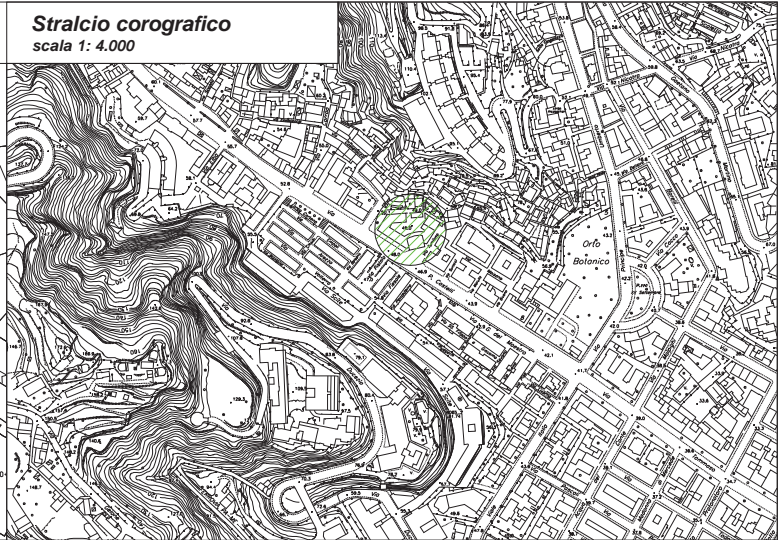


Ex Istituto d'Anatomia - via Pietro Castelli

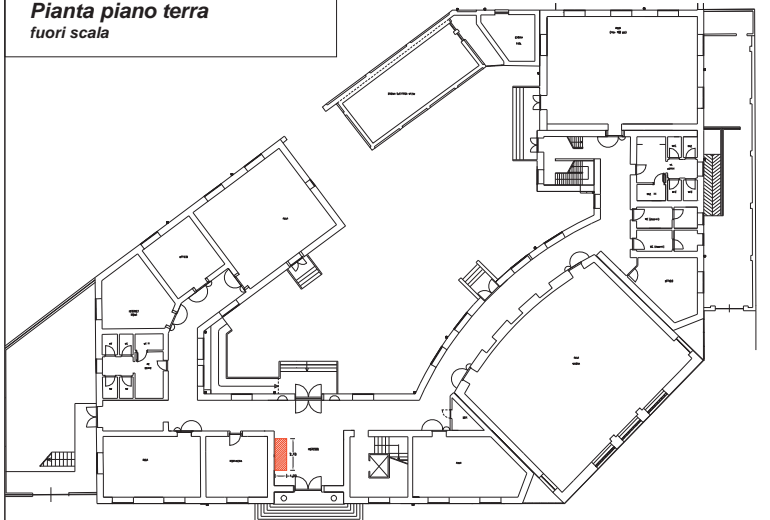
Stralcio catastale
scala 1: 1.000



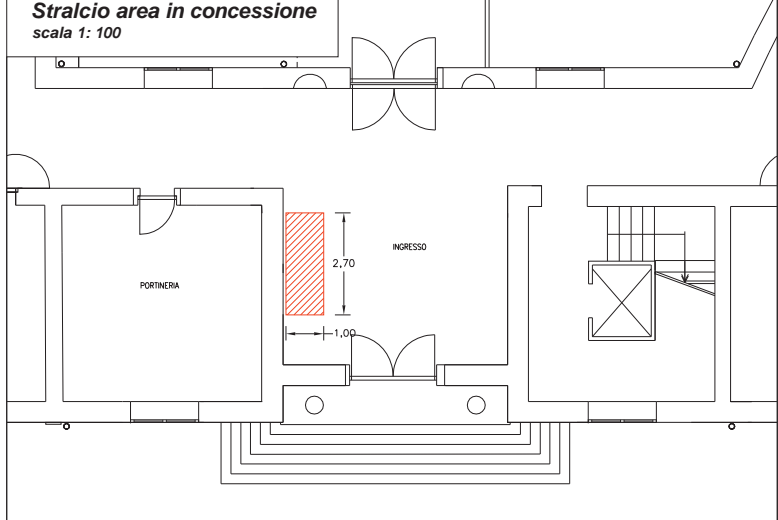
Stralcio corografico
scala 1: 4.000



Pianta piano terra
fuori scala

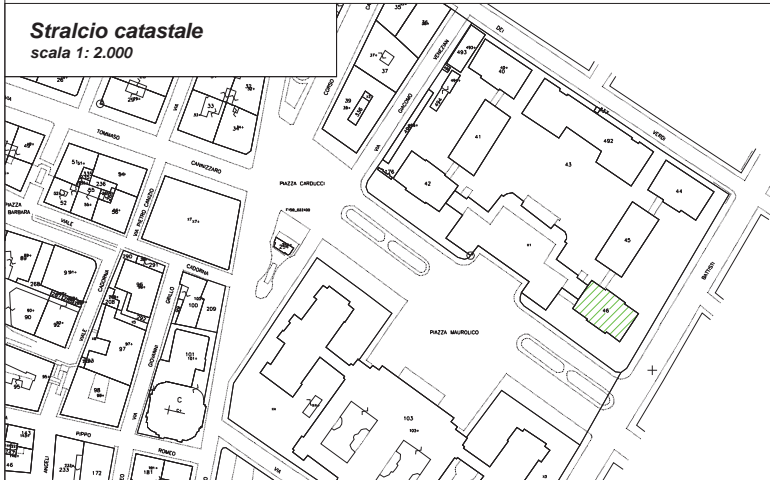


Stralcio area in concessione
scala 1: 100

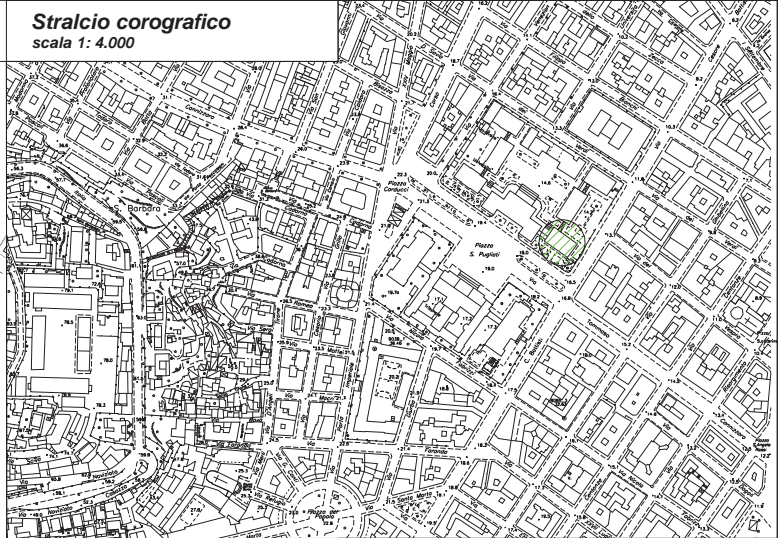


Giurisprudenza, Plesso centrale Edificio B - piazza Pugliatti

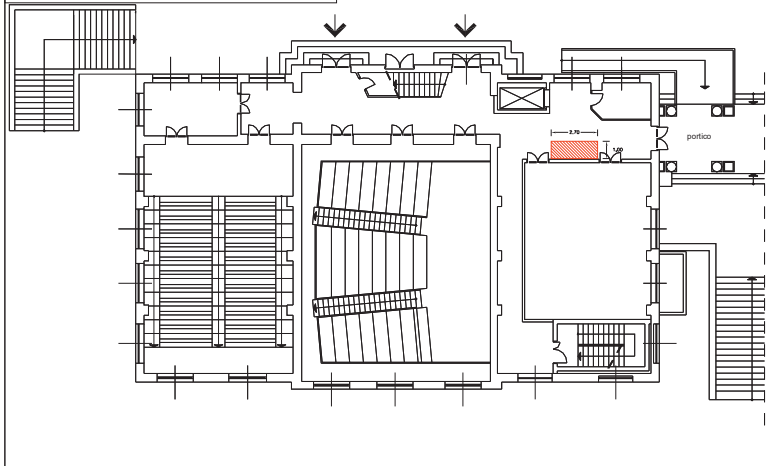
Stralcio catastale
scala 1: 2.000



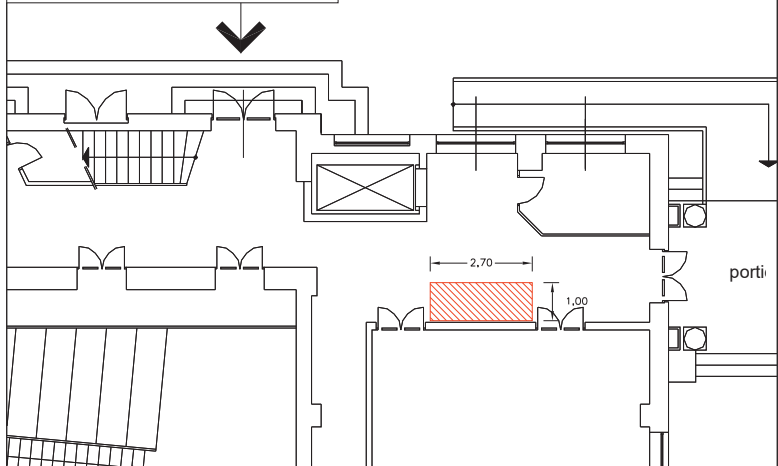
Stralcio corografico
scala 1: 4.000



Pianta piano terra
fuori scala

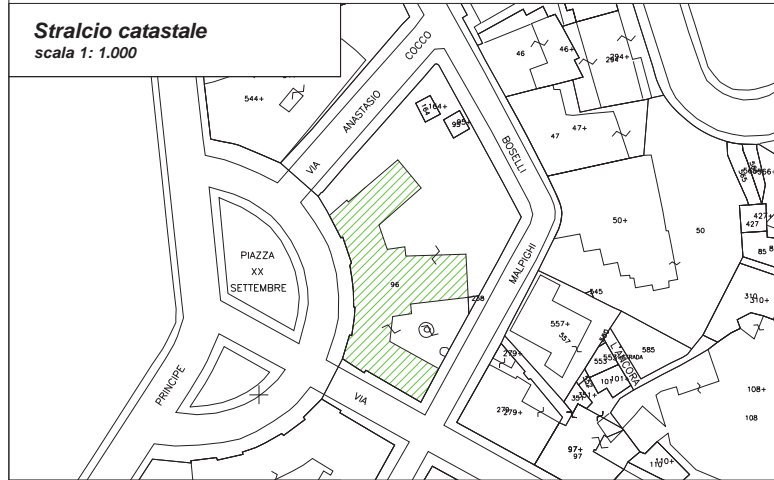


Stralcio area in concessione
scala 1: 100

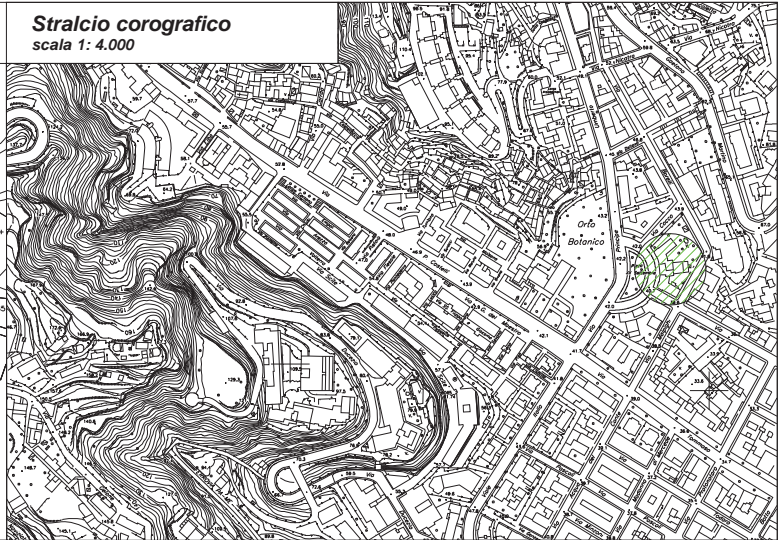


Ex Istituto di Farmacologia e Microbiologia - piazza XX Settembre

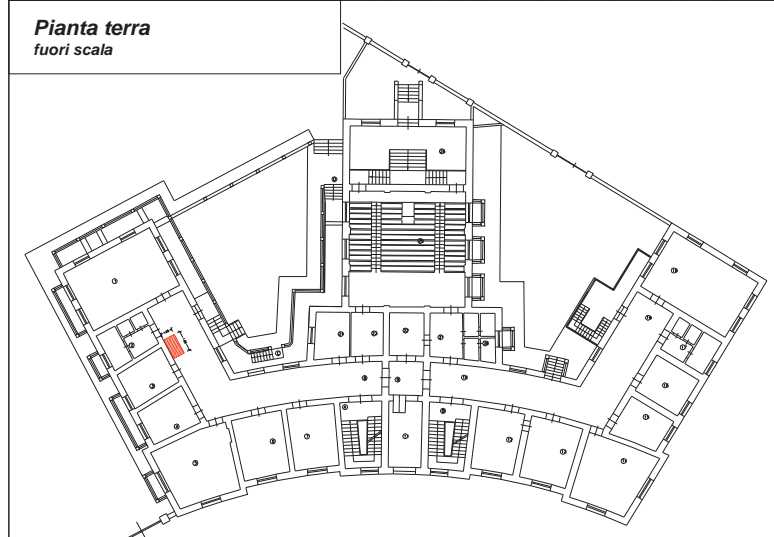
Stralcio catastale
scala 1: 1.000



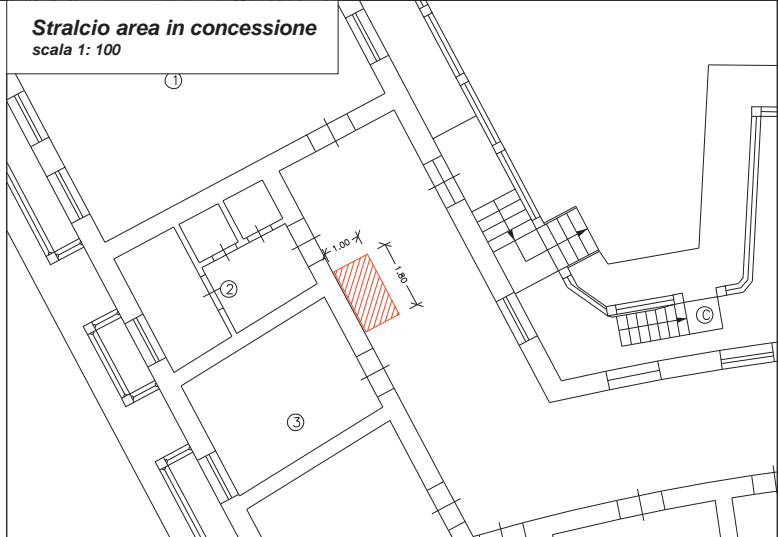
Stralcio corografico
scala 1: 4.000



Pianta terra fuori scala

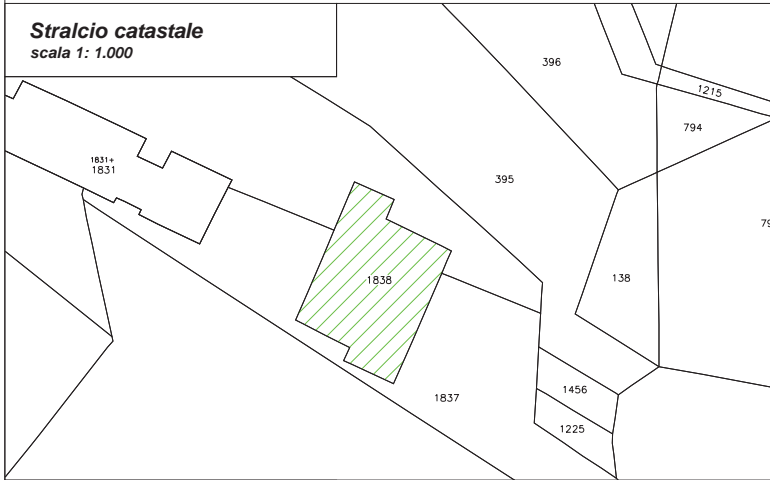


Stralcio area in concessione
scala 1: 100

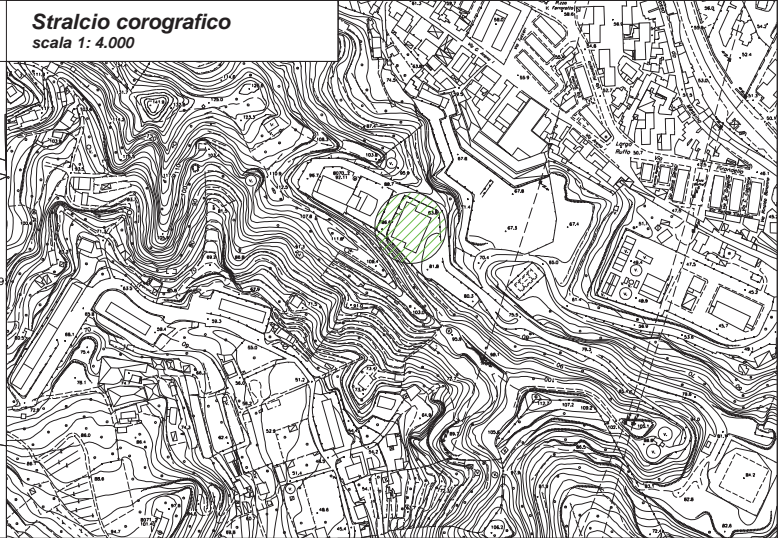


Palazzo dei Congressi - AOU Policlinico

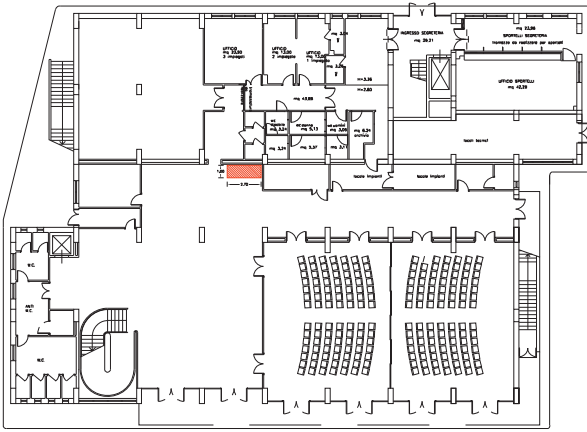
Stralcio catastale
scala 1: 1.000



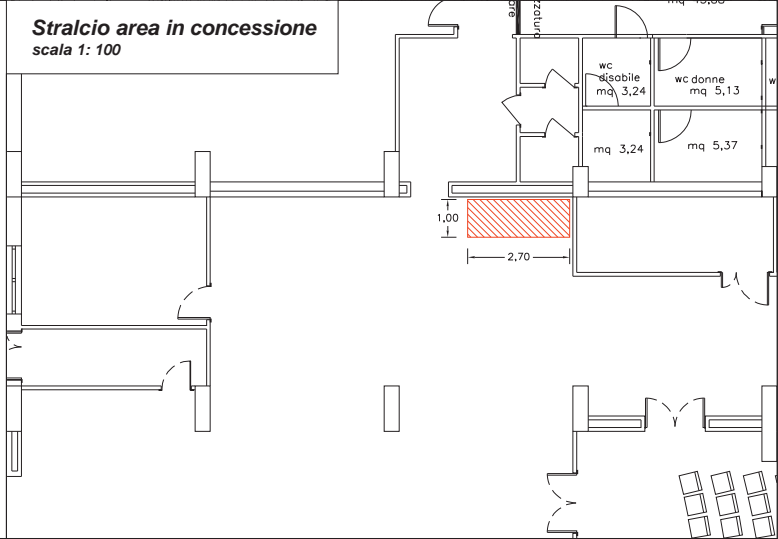
Stralcio corografico
scala 1: 4.000



Pianta piano terra
fuori scala

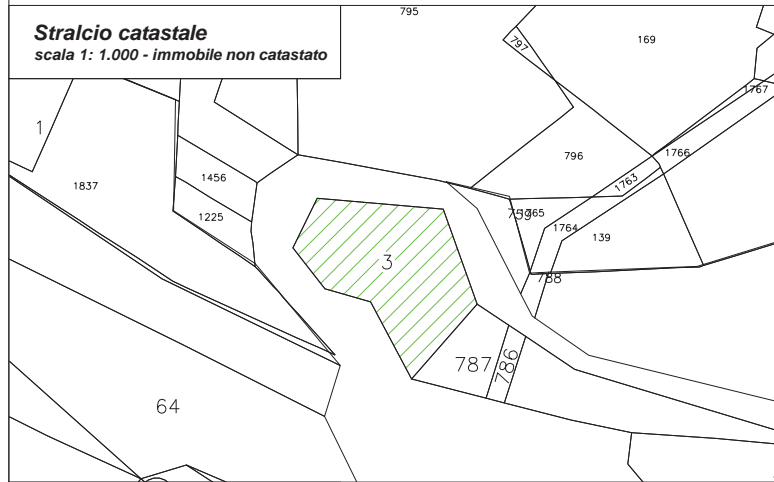


Stralcio area in concessione
scala 1: 100



Polo Didattico - AOU Policlinico

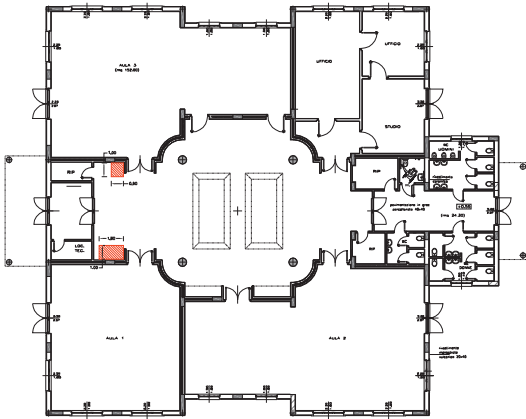
Stralcio catastale
scala 1: 1.000 - immobile non catastato



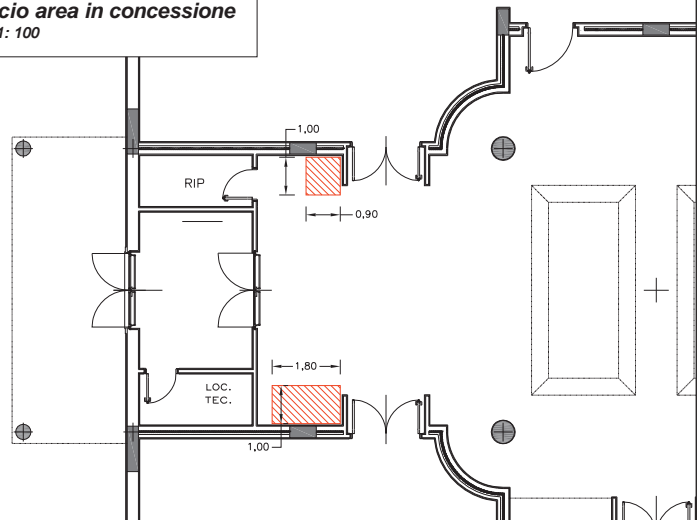
Stralcio corografico
scala 1: 4.000



Pianta piano terra
fuori scala



Stralcio area in concessione
scala 1: 100

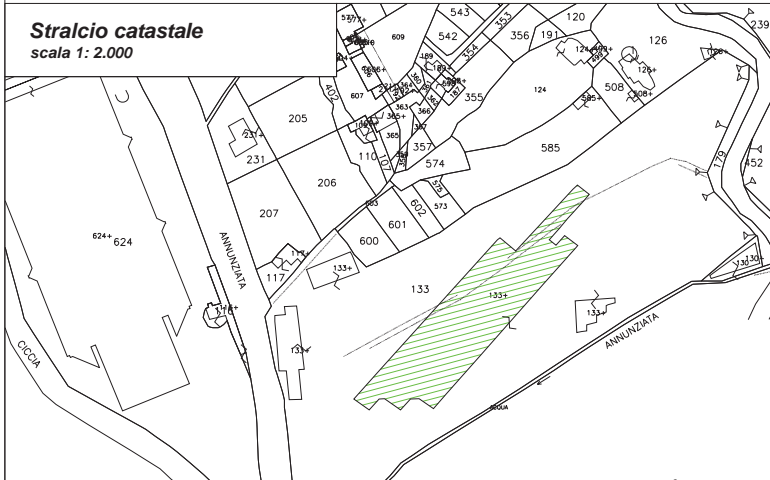


Individuazione planimetrica delle aree

POLO ANNUNZIATA

Dipartimento SCIFAR - località Annunziata

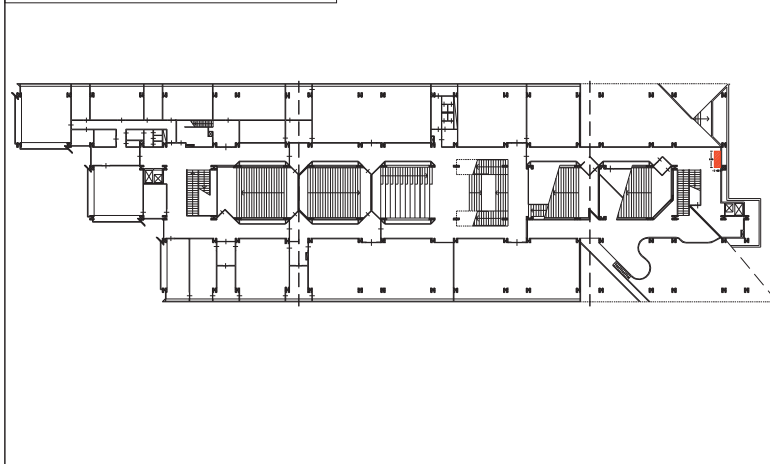
Stralcio catastale
scala 1: 2.000



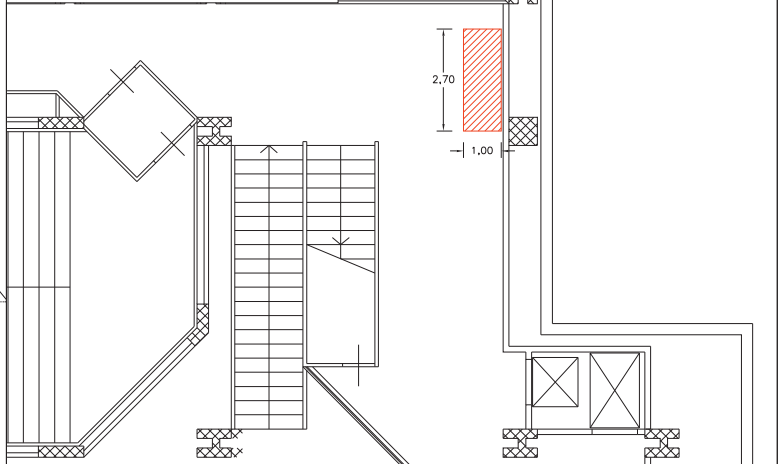
Stralcio corografico
scala 1: 4.000



Pianta livello quarto
fuori scala

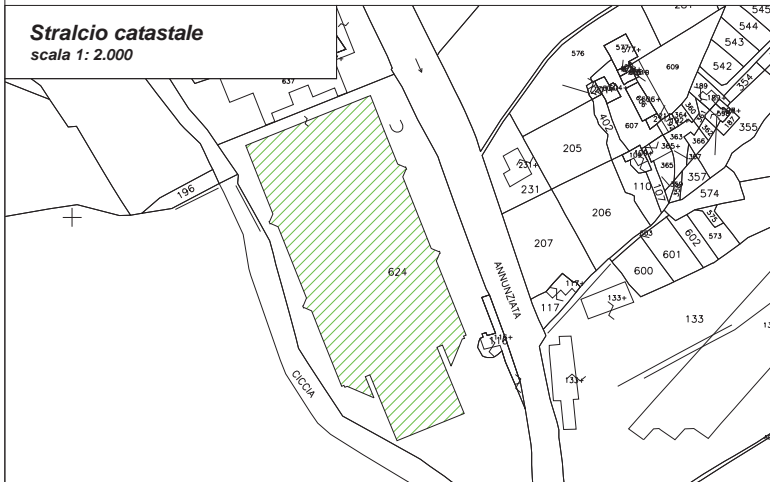


Stralcio area in concessione
scala 1: 100



Dipartimento di Scienze Veterinarie - località Annunziata

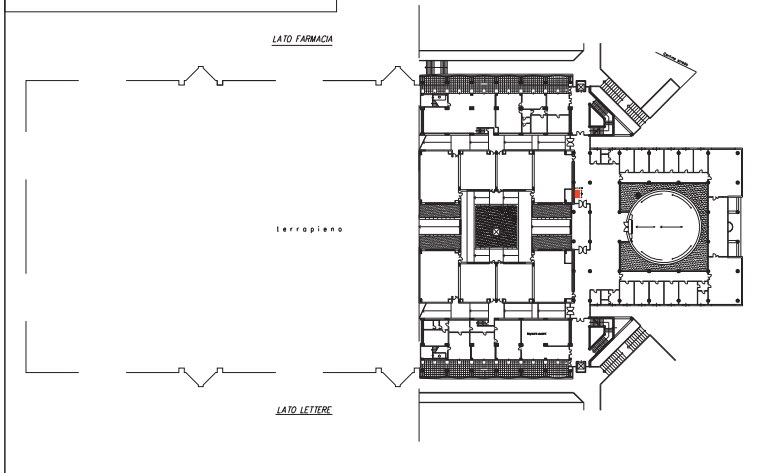
Stralcio catastale
scala 1: 2.000



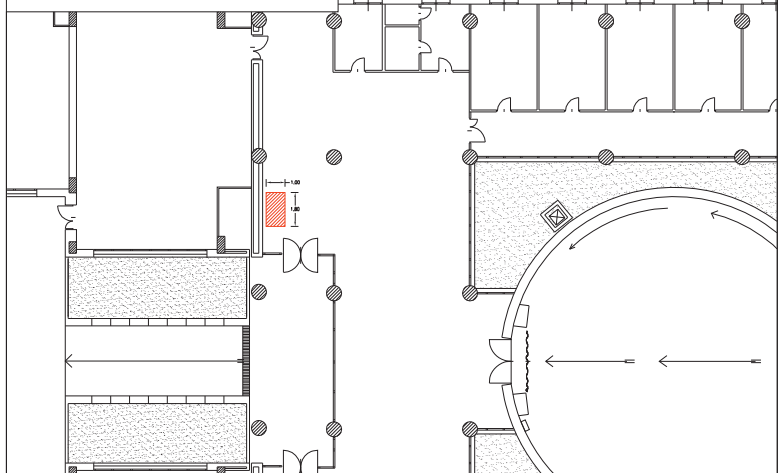
Stralcio corografico
scala 1: 4.000



Pianta secondo livello
fuori scala



Stralcio area in concessione
scala 1: 200



Ospedale Veterinario - località Annunziata

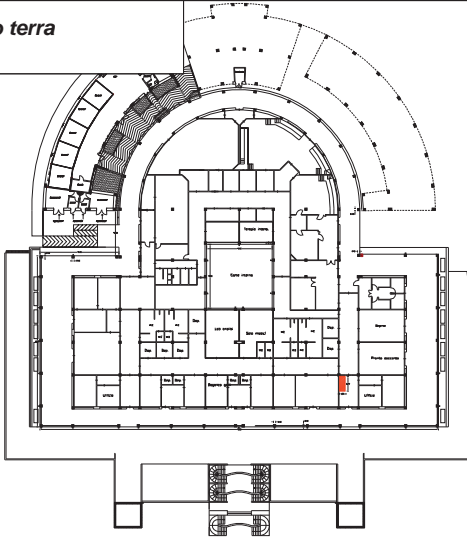
Stralcio catastale
scala 1: 2.000



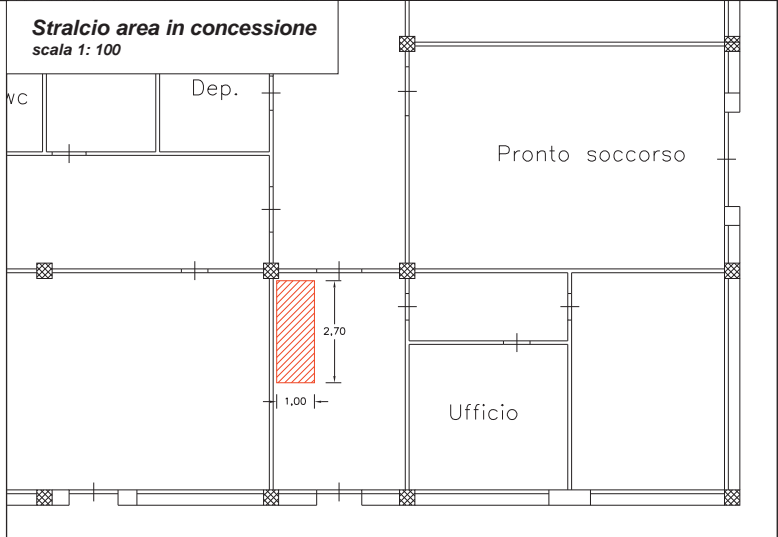
Stralcio corografico
scala 1: 4.000



Pianta piano terra
fuori scala



Stralcio area in concessione
scala 1: 100



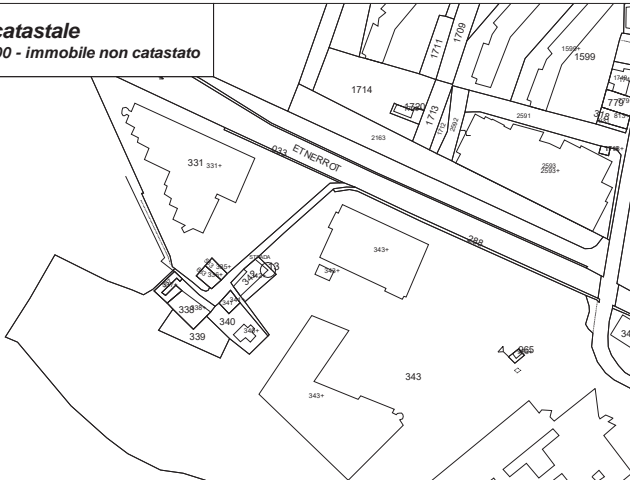
Individuazione planimetrica delle aree

POLO PAPARDO

Biblioteca Centralizzata - località Papardo

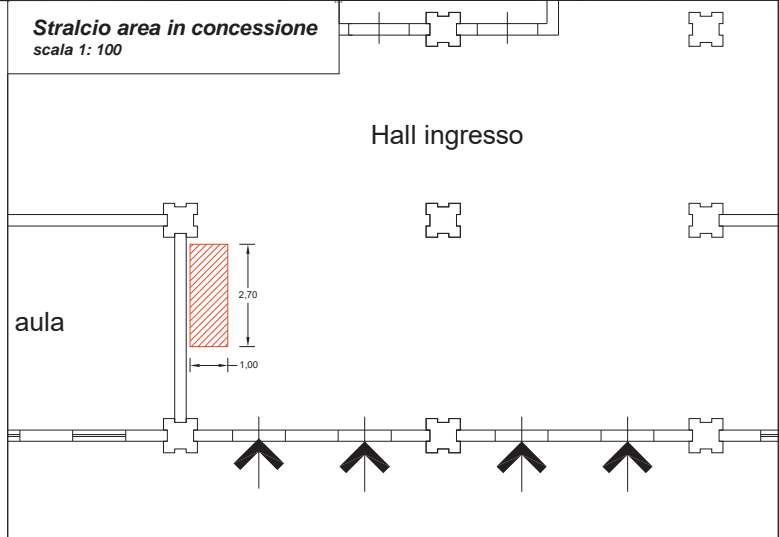
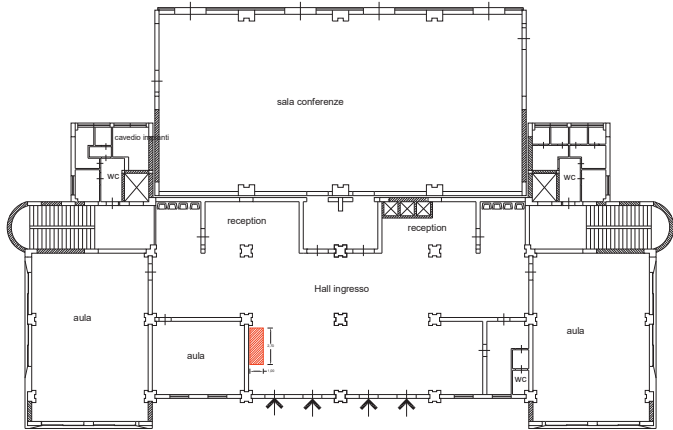
Stralcio corografico
scala 1: 4.000

Stralcio catastale
scala 1: 2.000 - immobile non catastato



Pianta piano terra
fuori scala

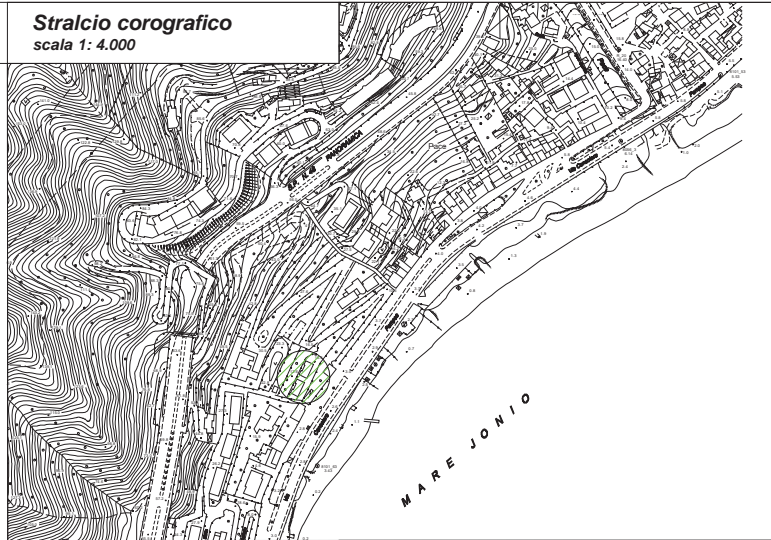
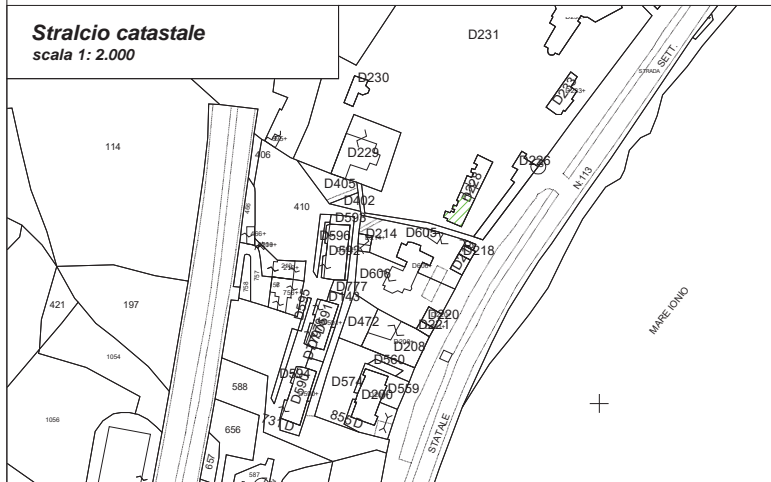
Stralcio area in concessione
scala 1: 100



Villa Pace - Palazzina B2 - via Consolare Pompea

Stralcio corografico
scala 1: 4.000

Stralcio catastale
scala 1: 2.000



Pianta piano terra
fuori scala

Stralcio area in concessione
scala 1: 100

