
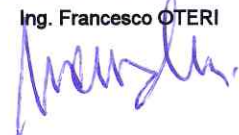




**UNIVERSITA' DEGLI STUDI DI MESSINA**  
**UNITA' SPECIALE DEI SERVIZI TECNICI**

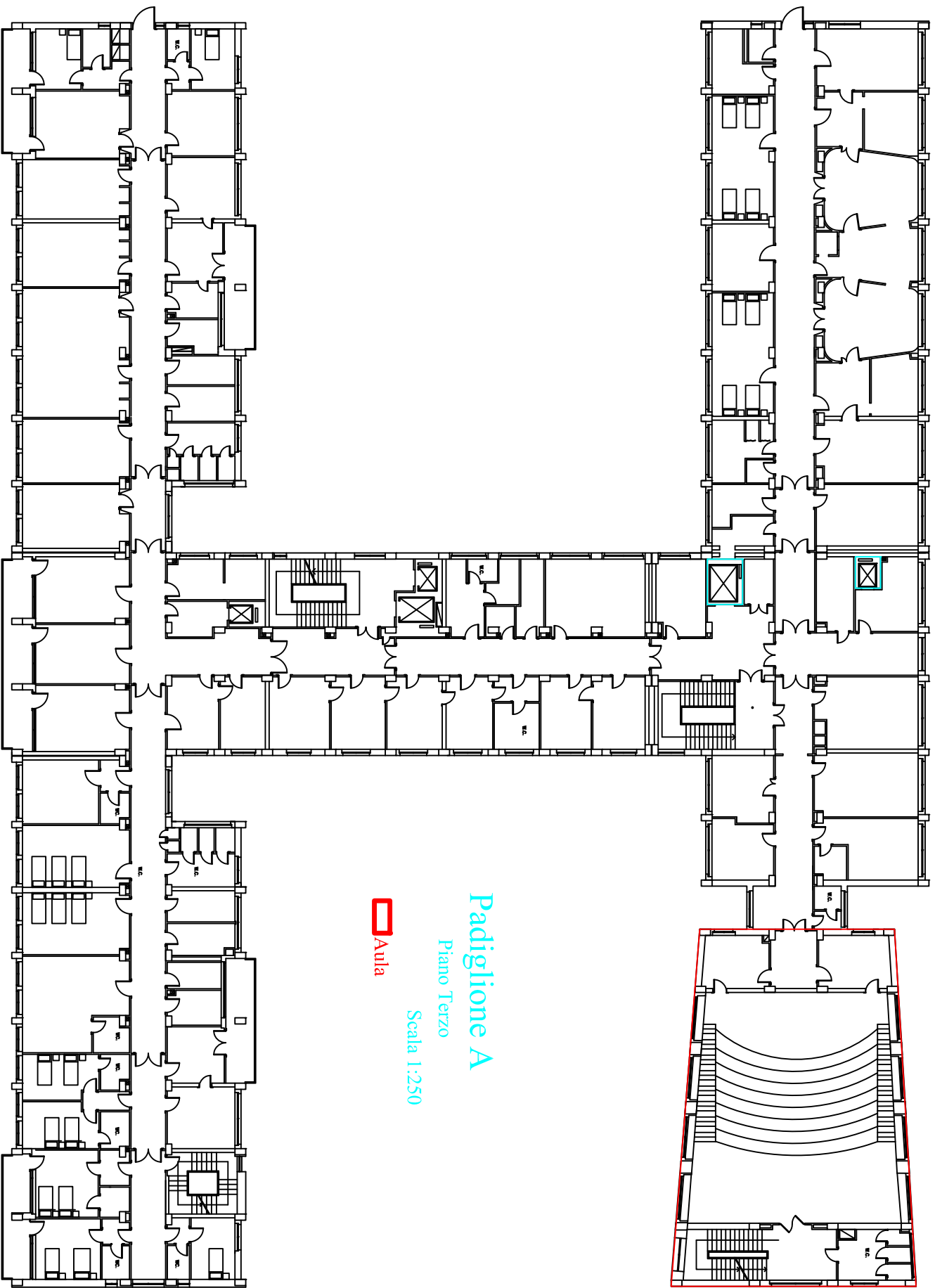


**APPALTO PER IL SERVIZIO DI CONDUZIONE, GESTIONE E  
 MANUTENZIONE DEGLI IMPIANTI TECNOLOGICI ESISTENTI  
 NEI LOCALI DI PROPRIETA' E IN USO A QUALSIASI TITOLO  
 DELL'UNIVERSITA' DEGLI STUDI DI MESSINA**

VALIDAZIONE		STRALCIO PLANIMETRIE LOCALI UBICATI PRESSO A.O.U. G. MARTINO - POLO CITTA'	Elaborato		
AGGIORNAMENTO			TAV.	06	
MESSINA	MARZO 2015				
<b>UNITA' ORGANIZZATIVA</b> <i>Manutenzione Ordinaria, Straordinaria          Strutture Edilizie e Impianti</i> Arch. Maria Giovanna Leonardi					
<b>UNITA' OPERATIVE</b> <i>Polo Città</i> Geom. Renato Mommo		 <i>Polo Annunziata</i> Geom. Giuseppe De Leo	IL RESPONSABILE dell'U.S. dei SERVIZI TECNICI Ing. Francesco OTERI 		
<i>Polo Papardo</i> Geom. Nunzio Chillé					

Questo elaborato è di esclusiva proprietà dell'Università degli Studi di Messina, realizzato dall'Unità Speciale dei Servizi Tecnici. Tutti i diritti sono riservati. E' vietata la riproduzione anche parziale e con qualsiasi strumento al di fuori dei termini di legge.





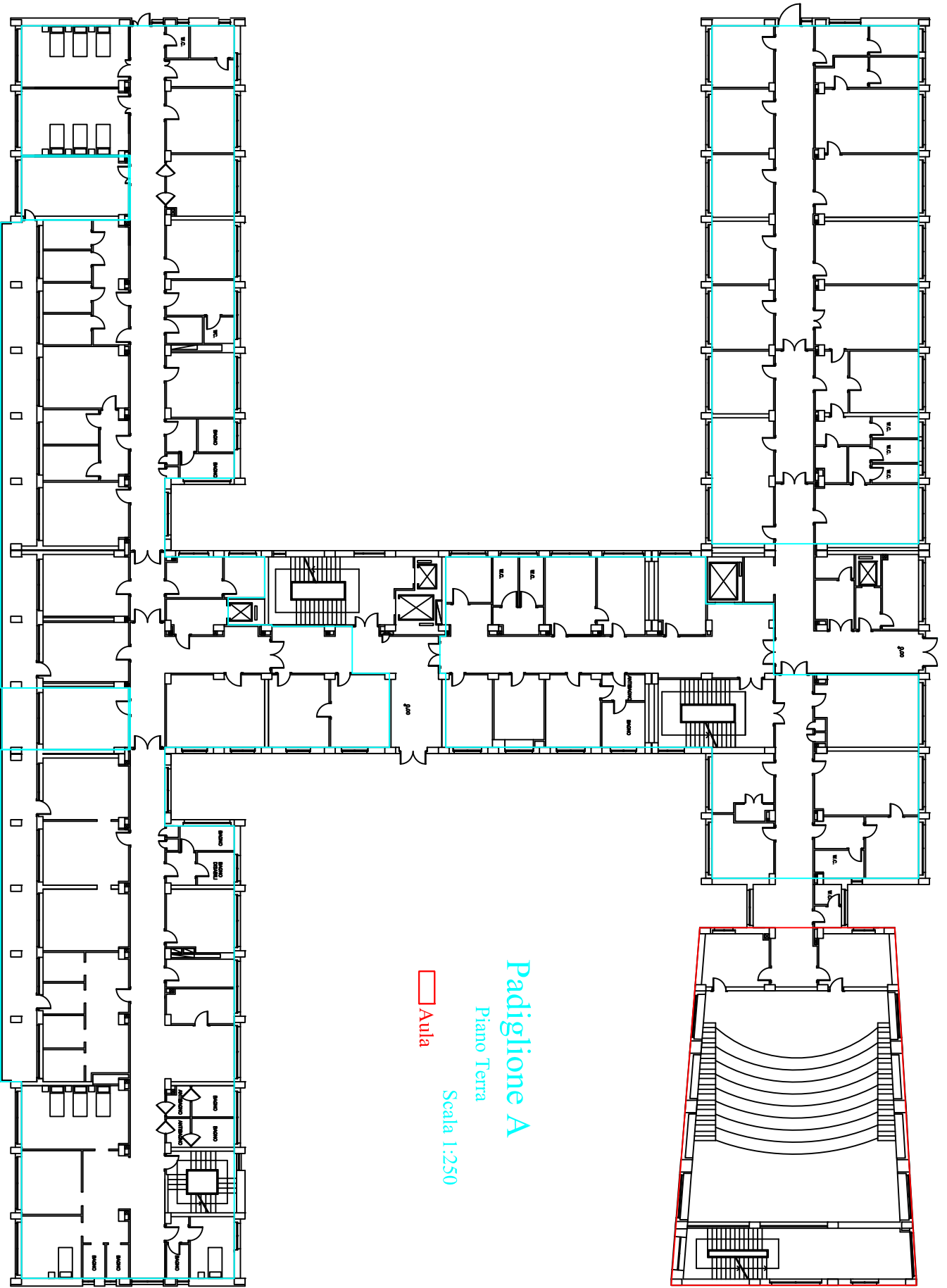
# Padiglione A

Piano Terzo

Scala 1:250



Aula

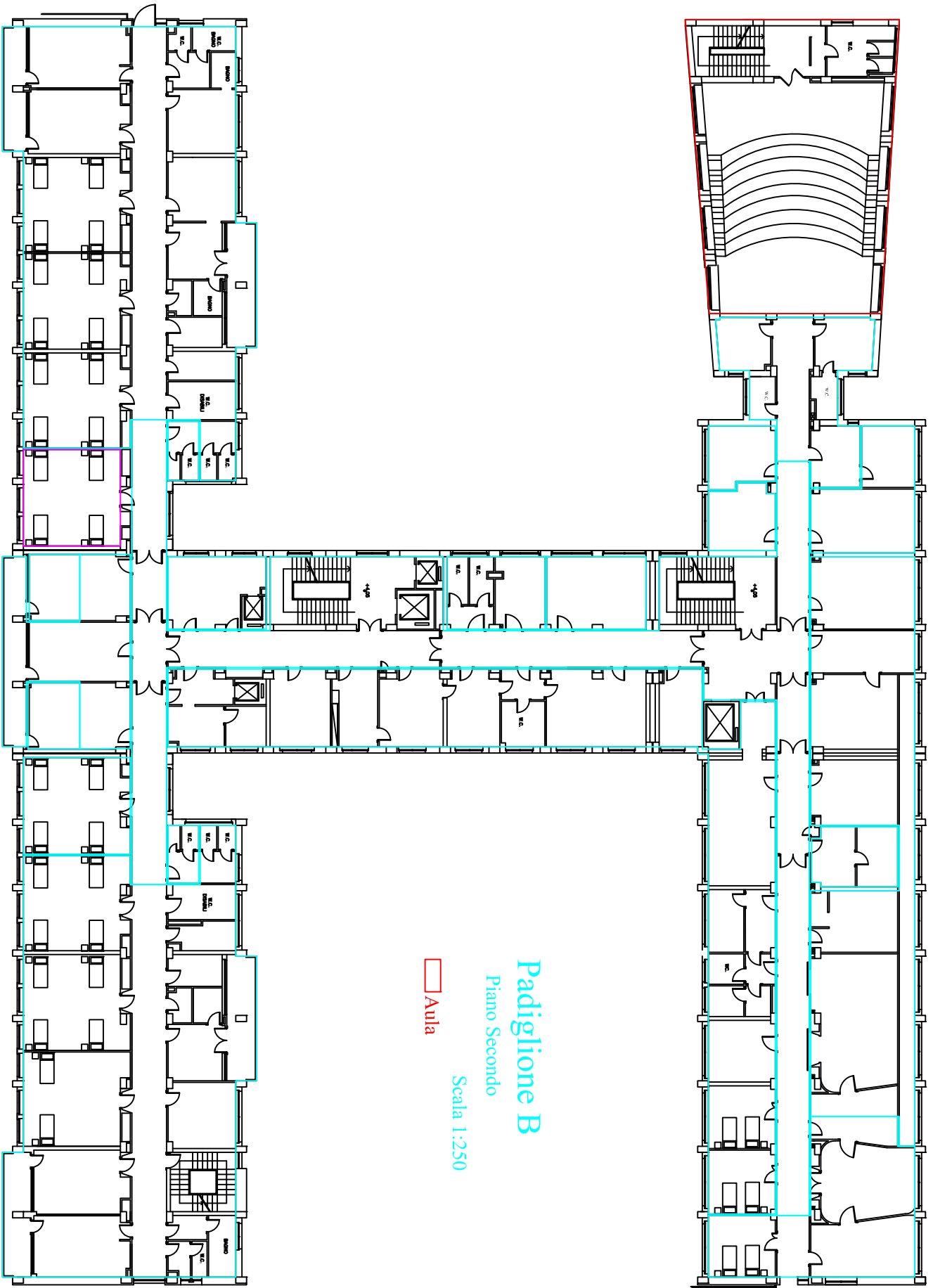


# Padiglione A

Piano Terra

Scala 1:250

 Aula

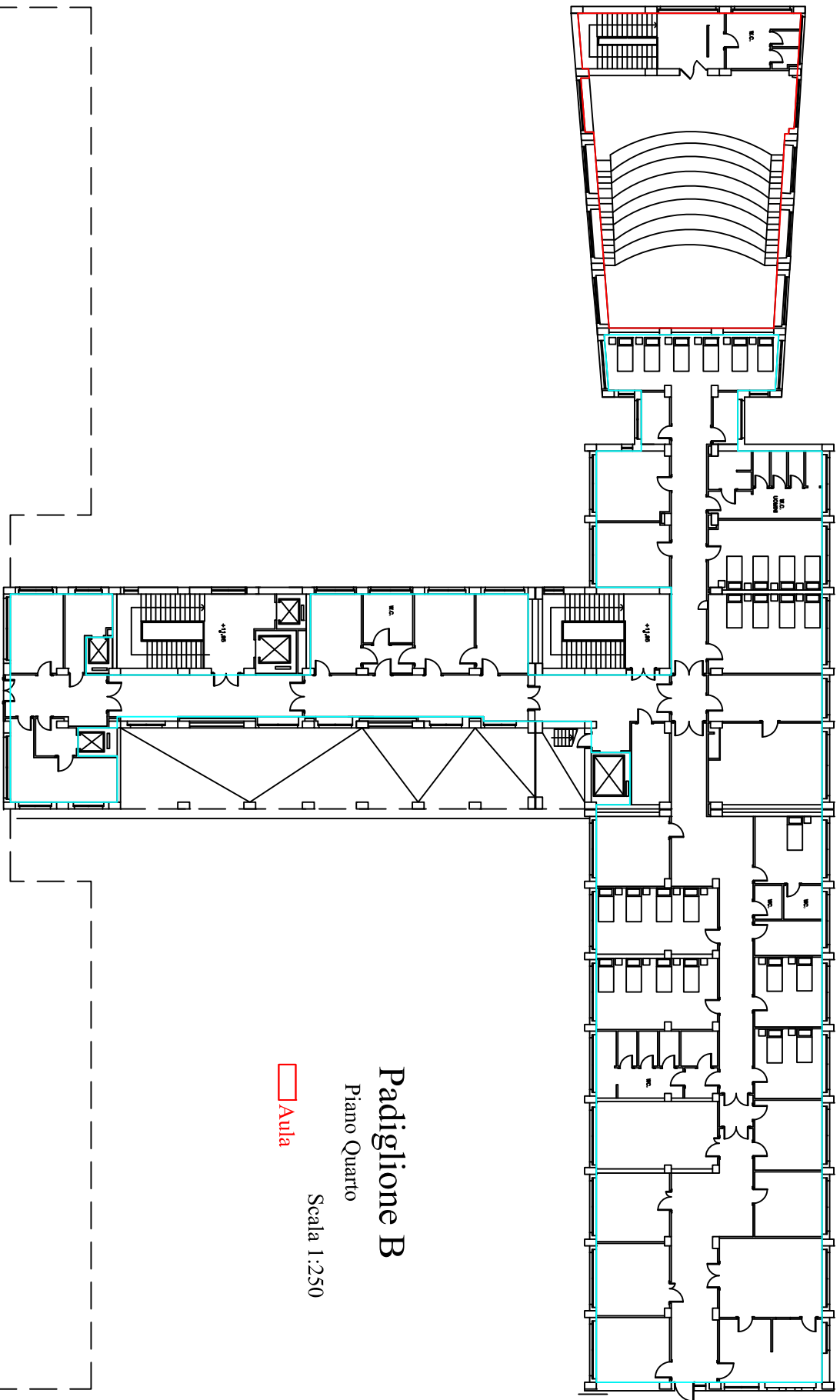


# Padiglione B

Piano Secondo

Scala 1:250

 Aula



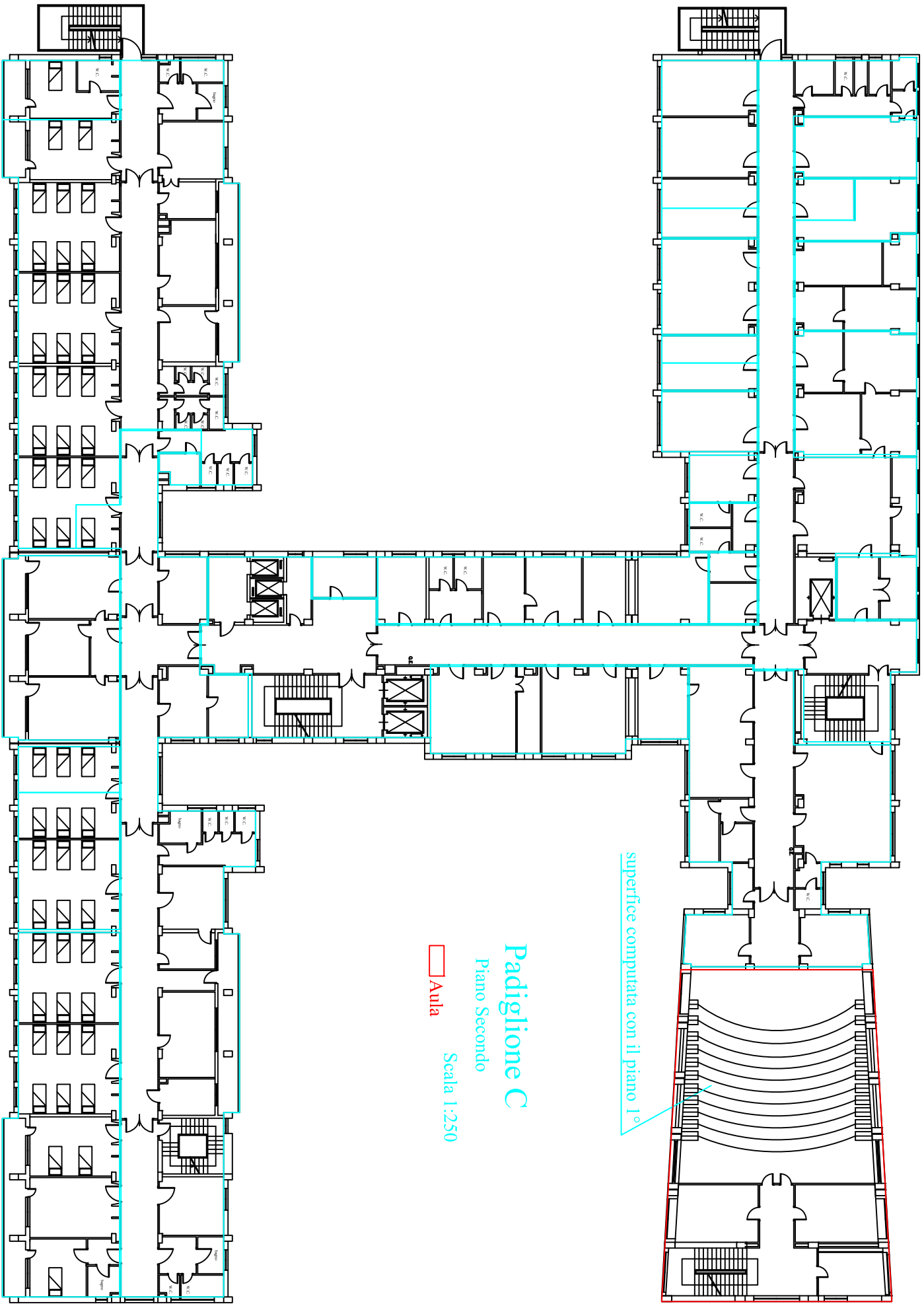
# Padiglione B

Piano Quarto

Scala 1:250



Aula



# Padiglione C

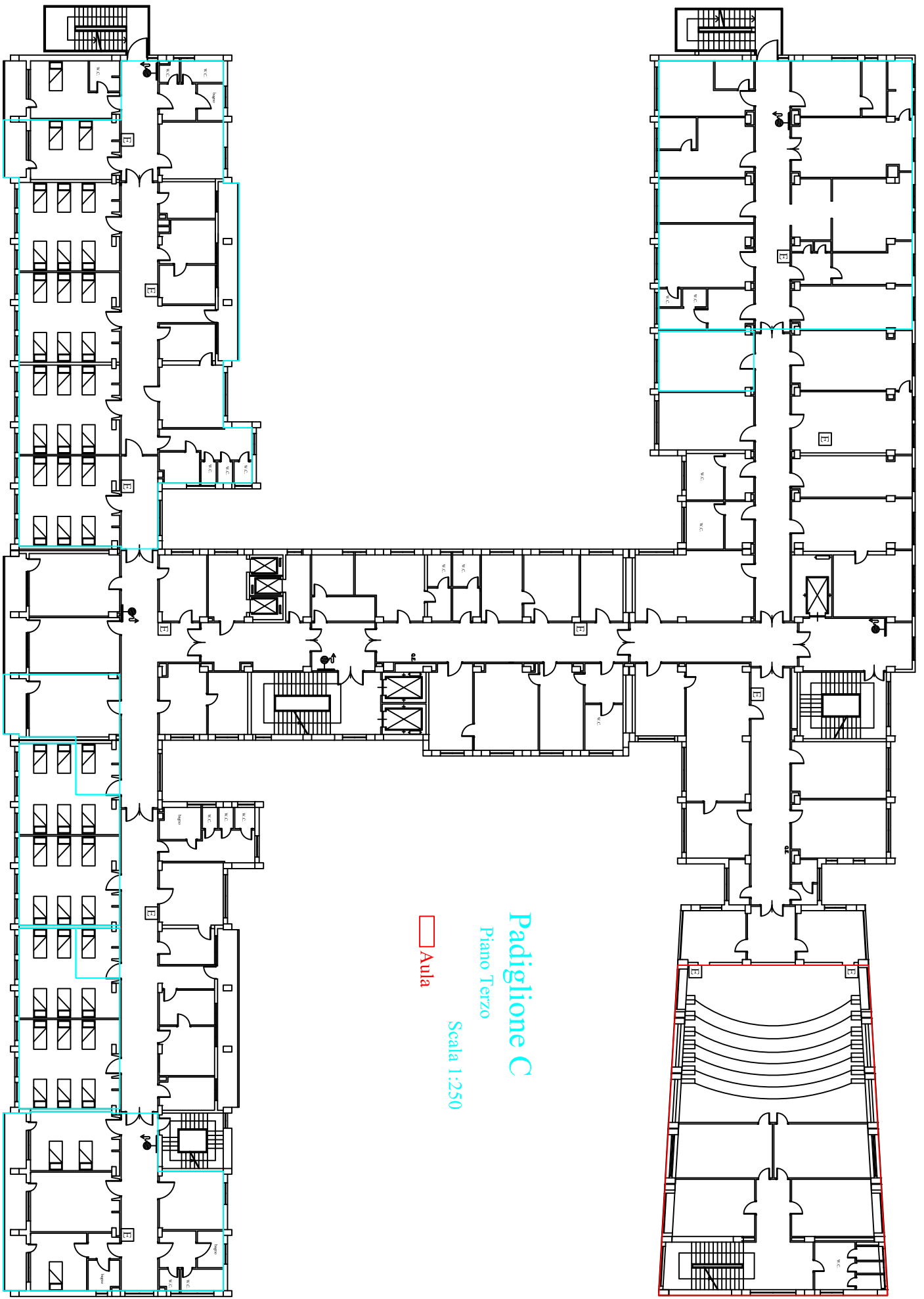
Piano Secondo



Aula

Scala 1:250

superficie computata con il piano 1°



# Padiglione C

Piano Terzo

Scala 1:250

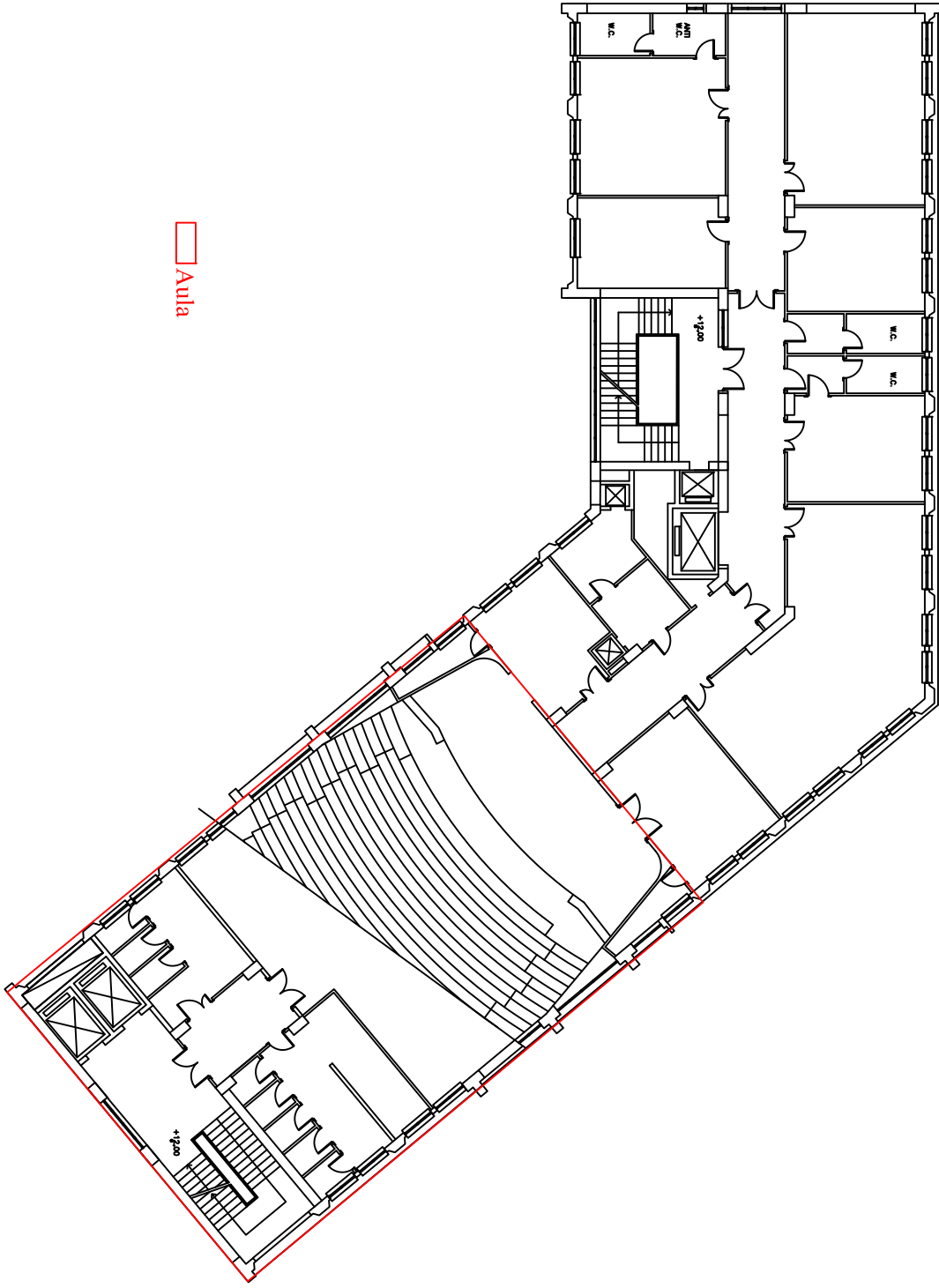
 Aula



# Padiglione D

Piano Terzo

Scala 1:200



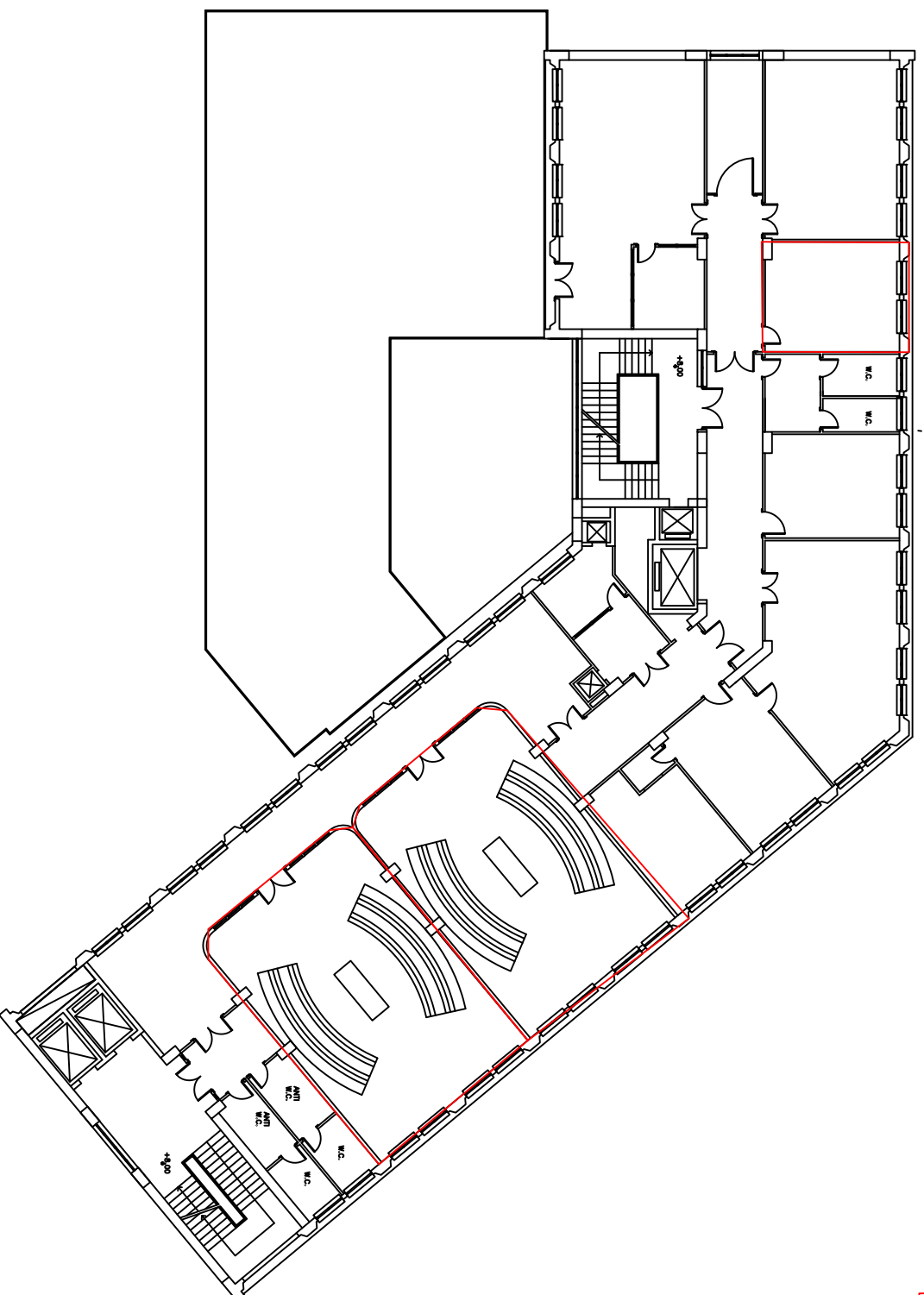
 Aula

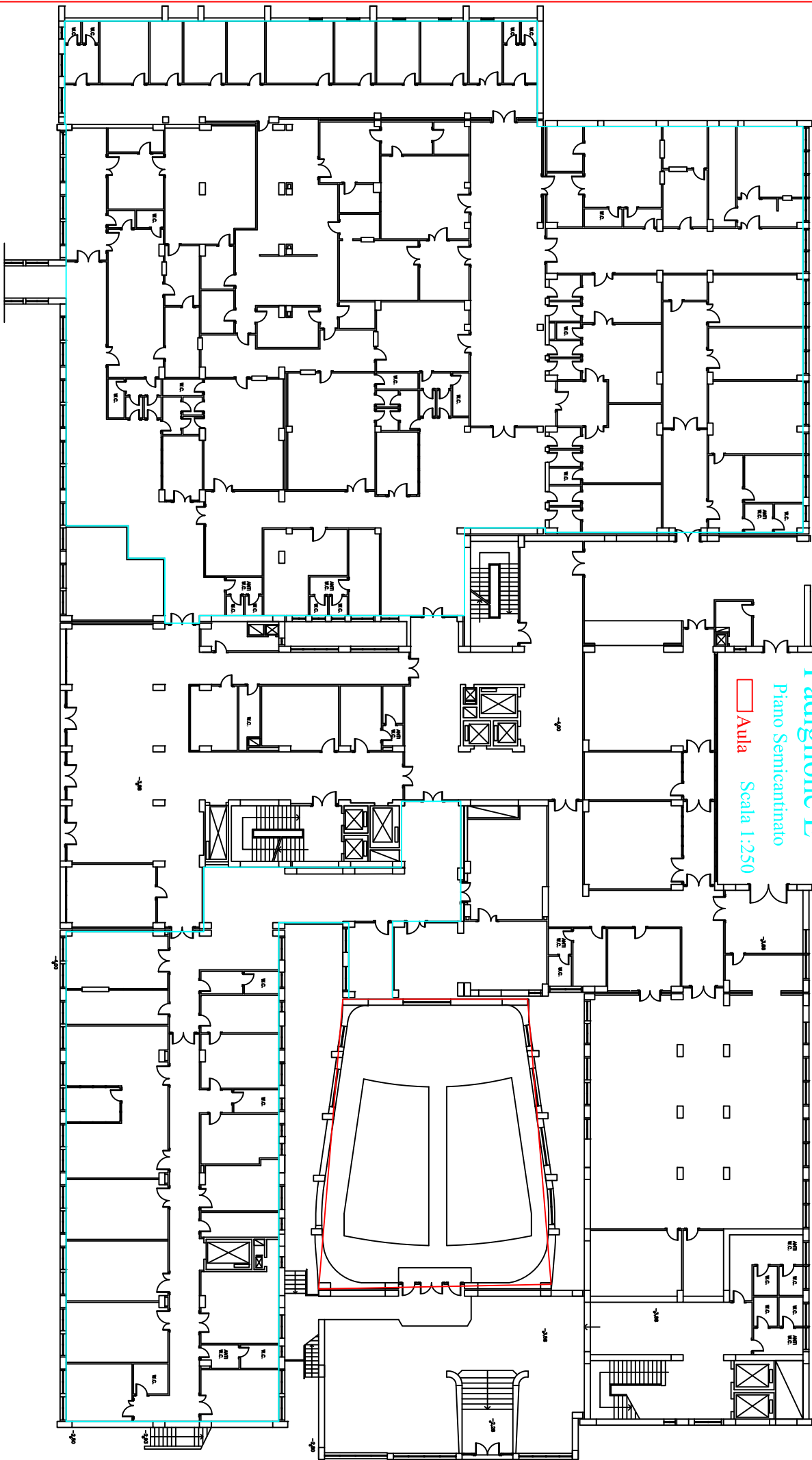
# Padiglione D

Piano Secondo

Scala 1:200

 Aule



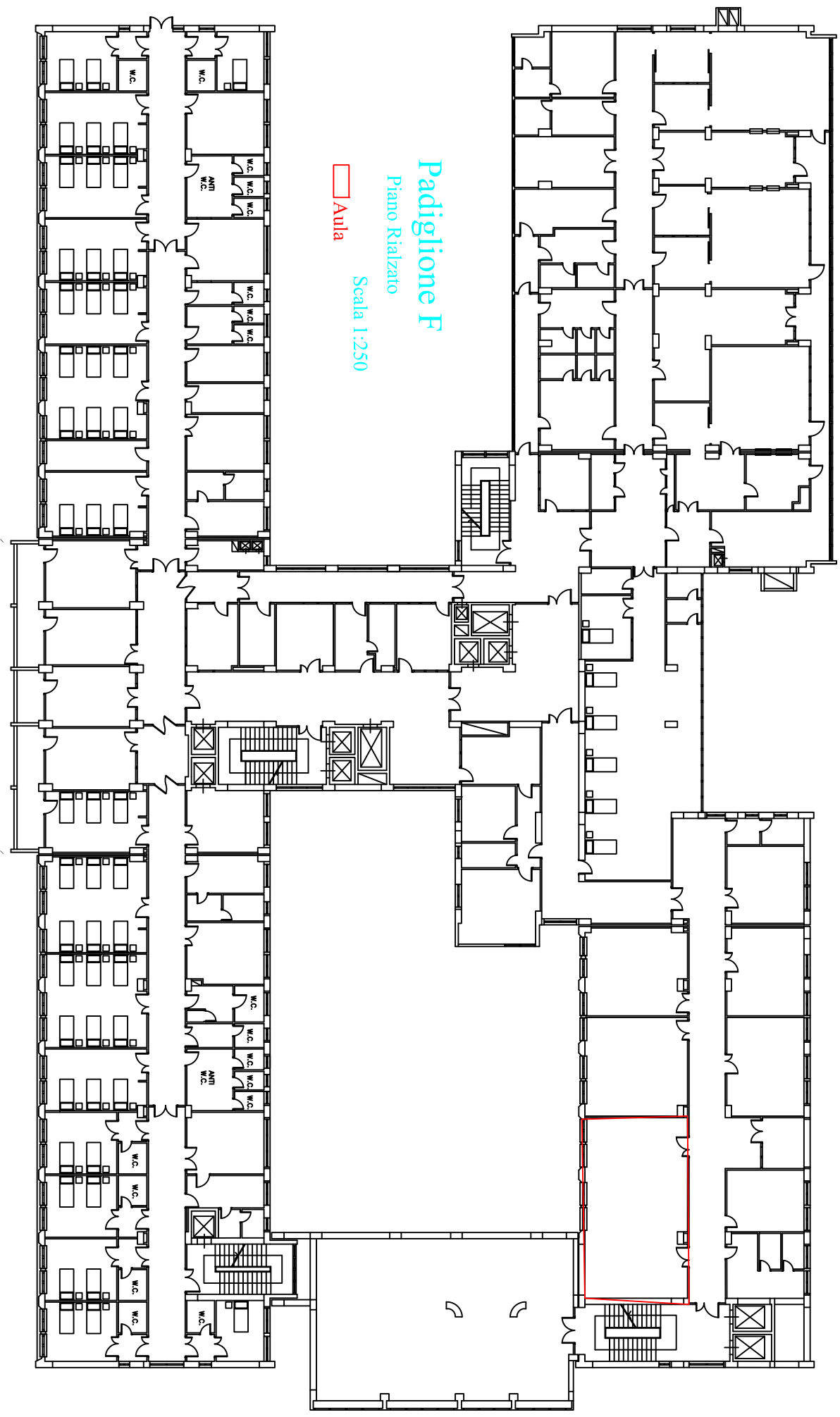


# Padiglione E

Piano Semicantinato

Aula

Scala 1:250

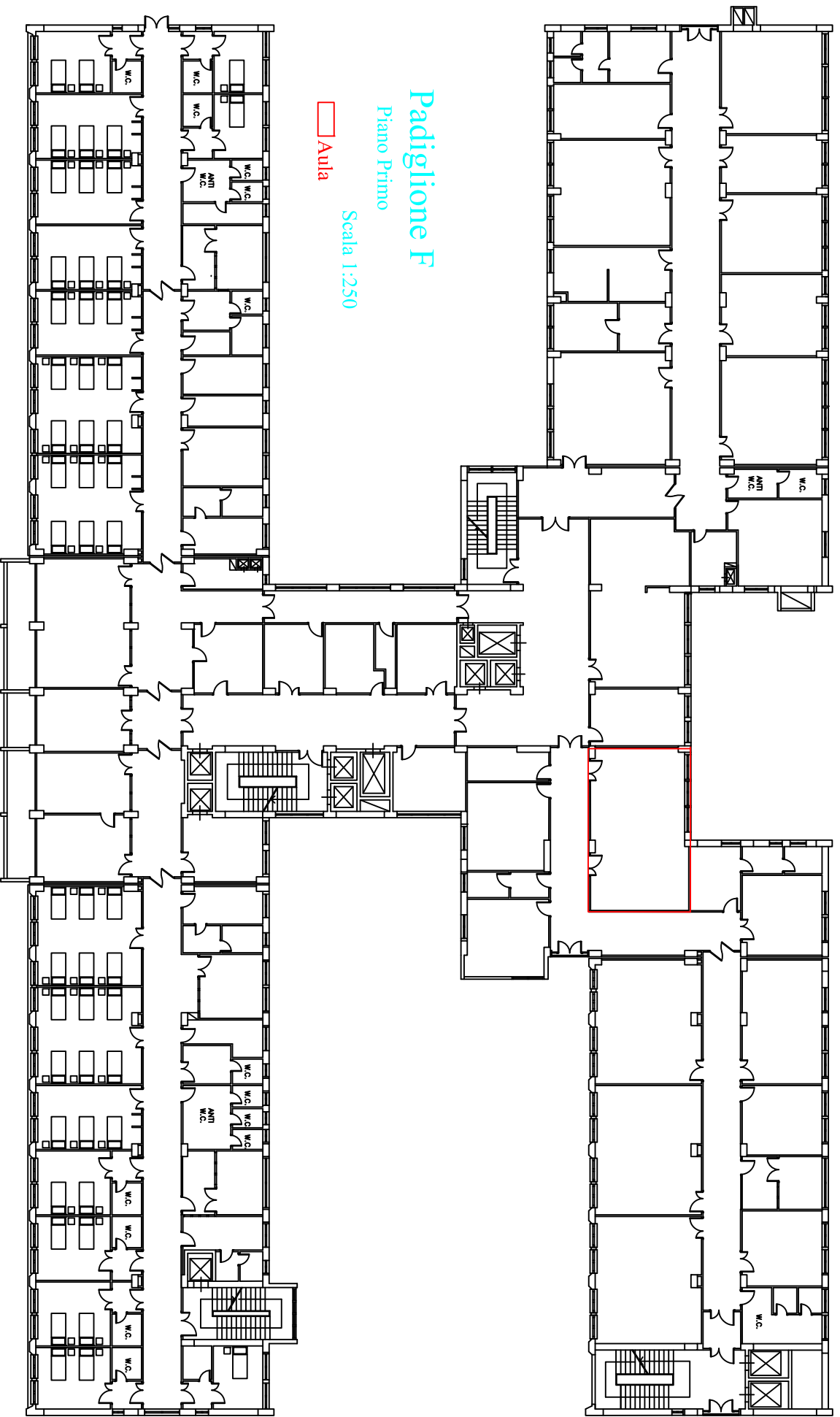


# Padiglione F

Piano Rialzato

Scala 1:250

□ Aula

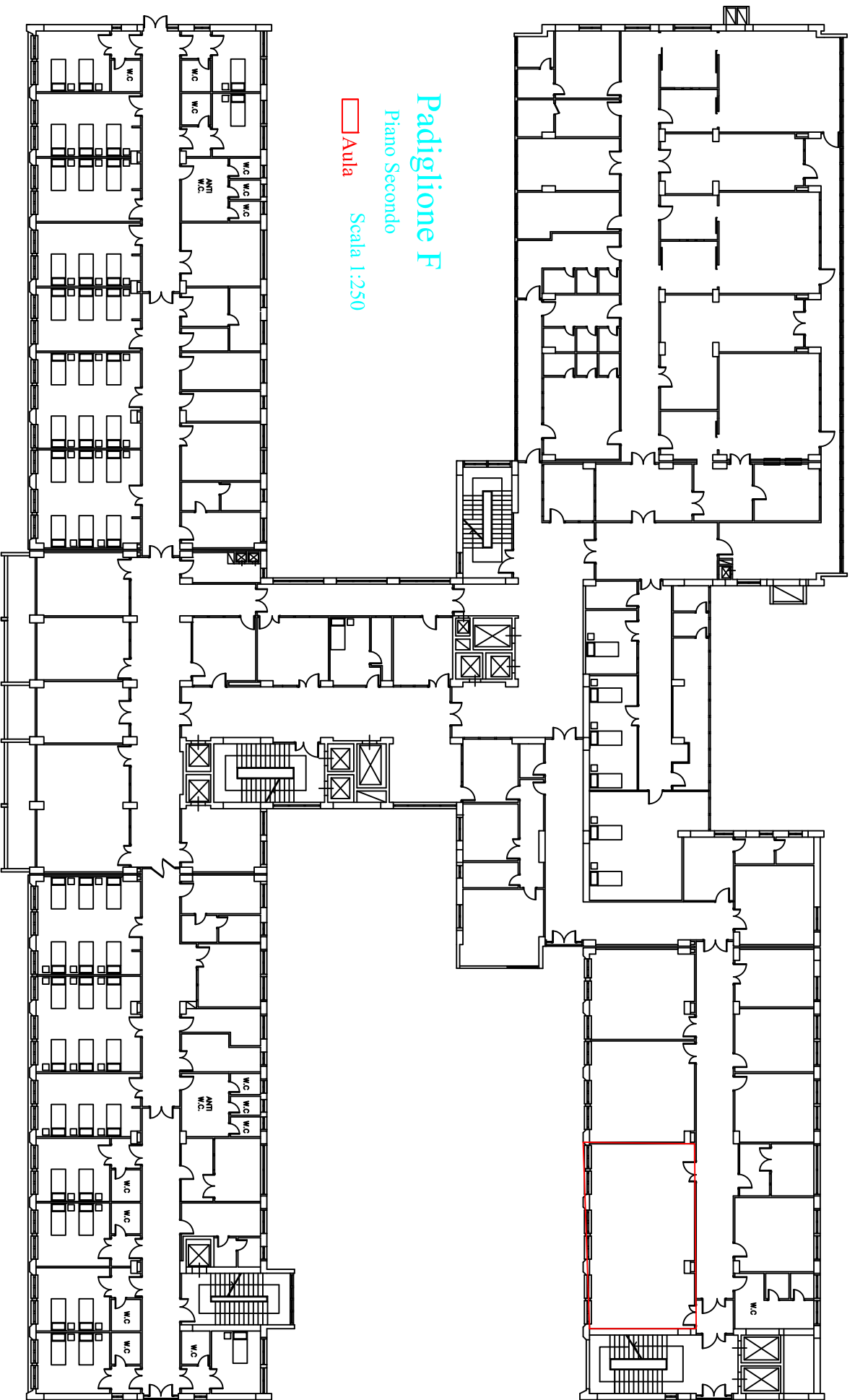


# Padiglione F

Piano Primo

Scala 1:250

□ Aula



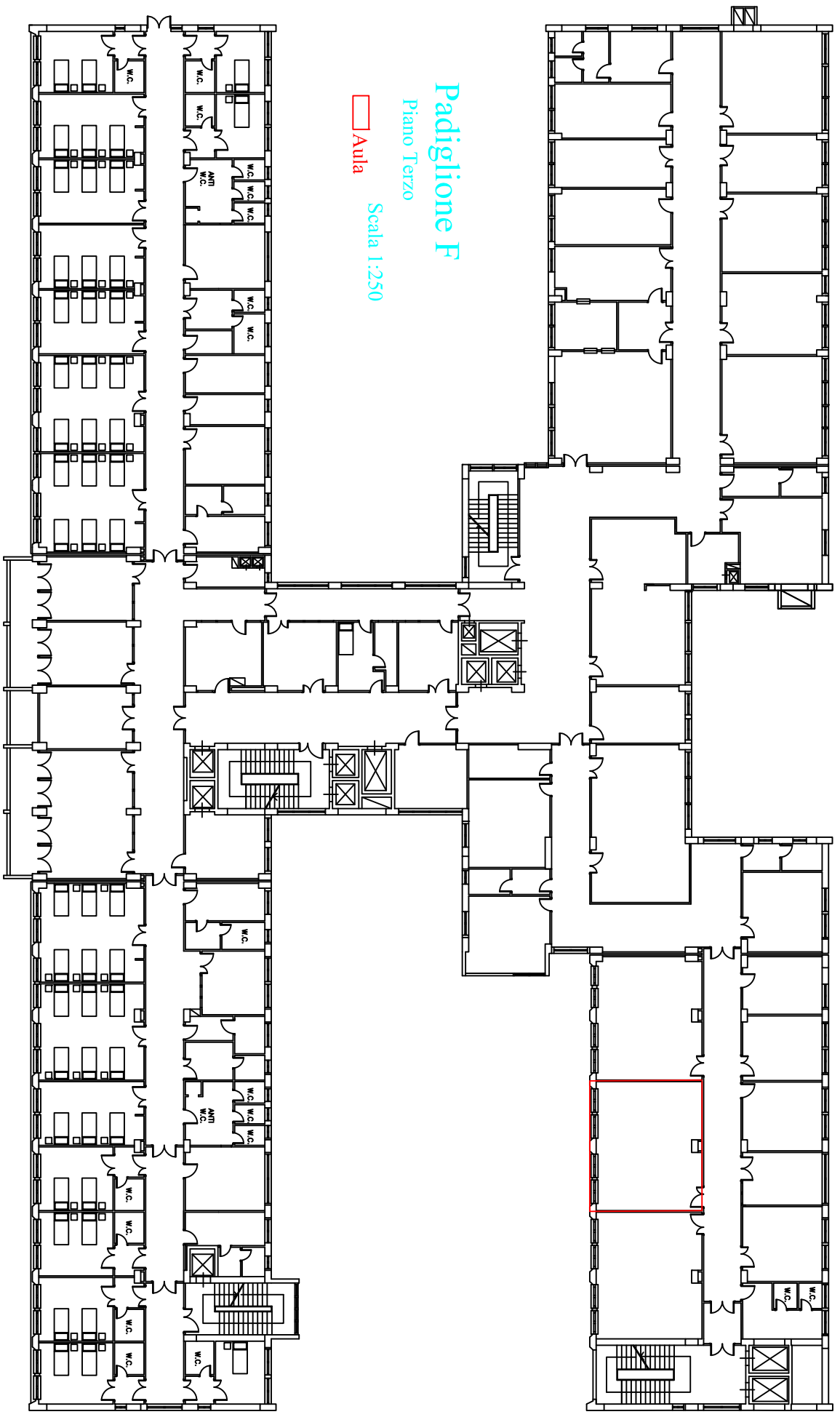
# Padiglione F

Piano Secondo



Aula

Scala 1:250

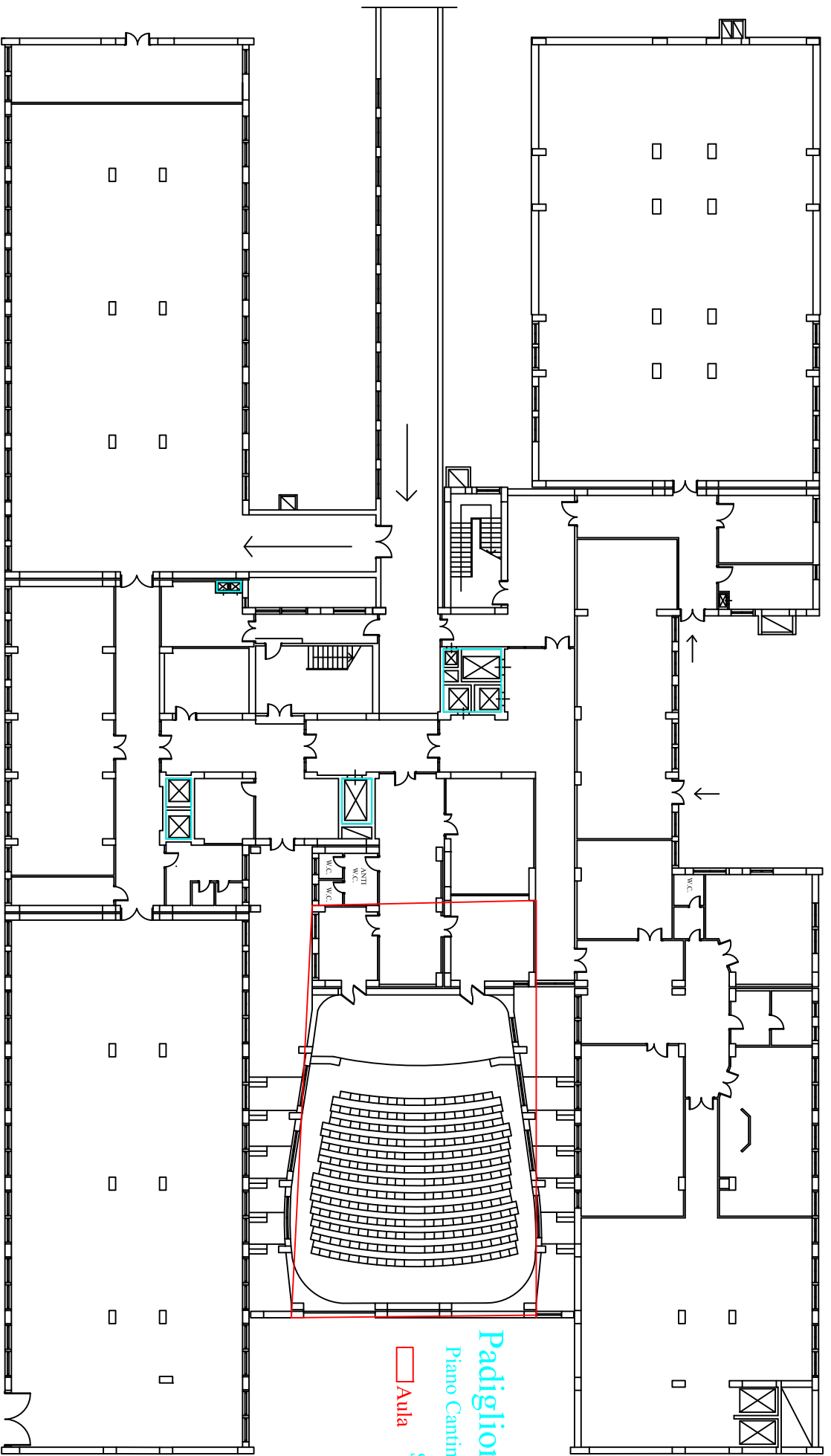


# Padiglione F

Piano Terzo

Scala 1:250

 Aula



# Padiglione F

Piano Cantinato

Scala 1:250

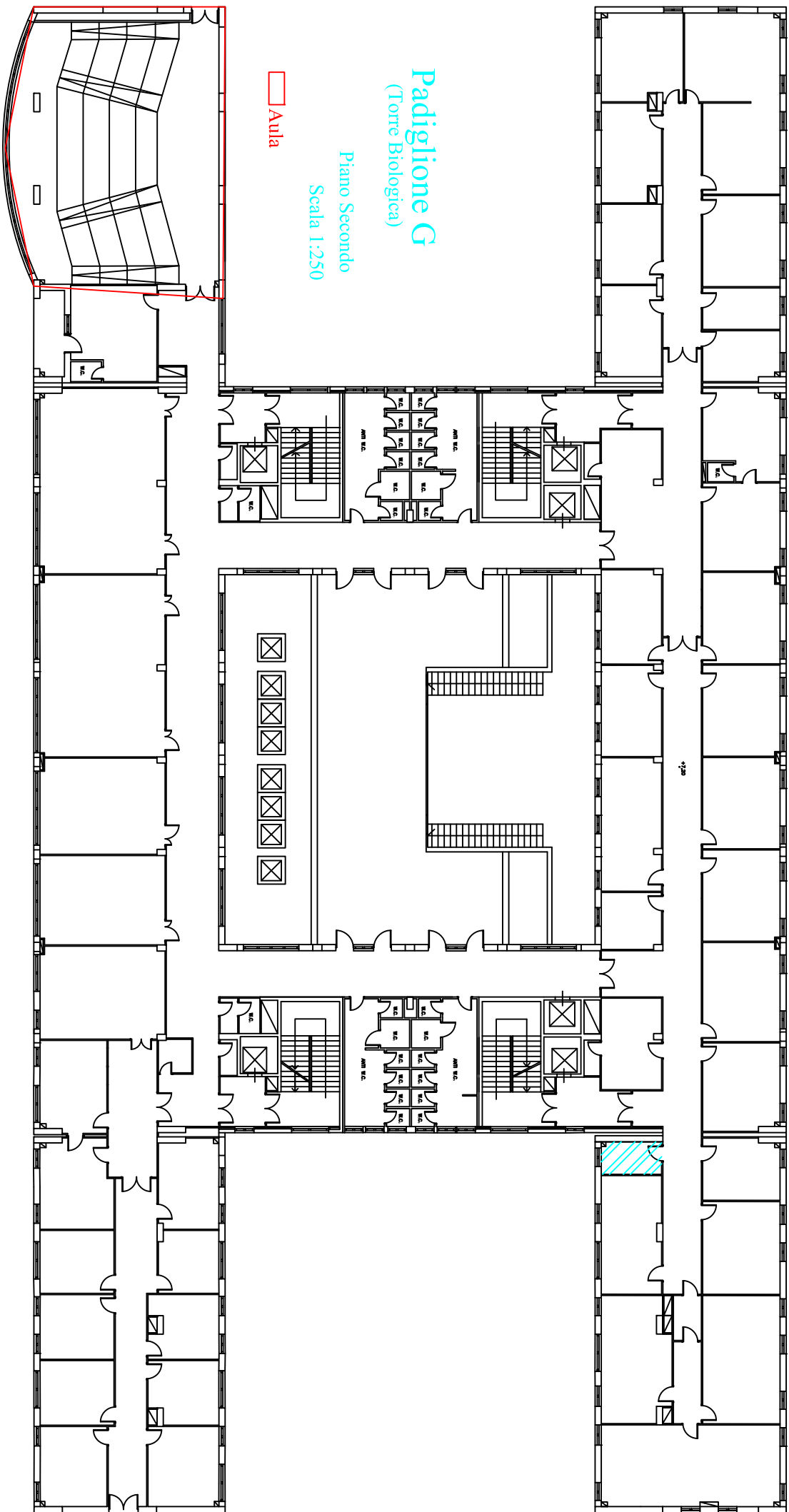
Aula



# Padiglione G (Torre Biologica)

Piano Secondo  
Scala 1:250

 Aula



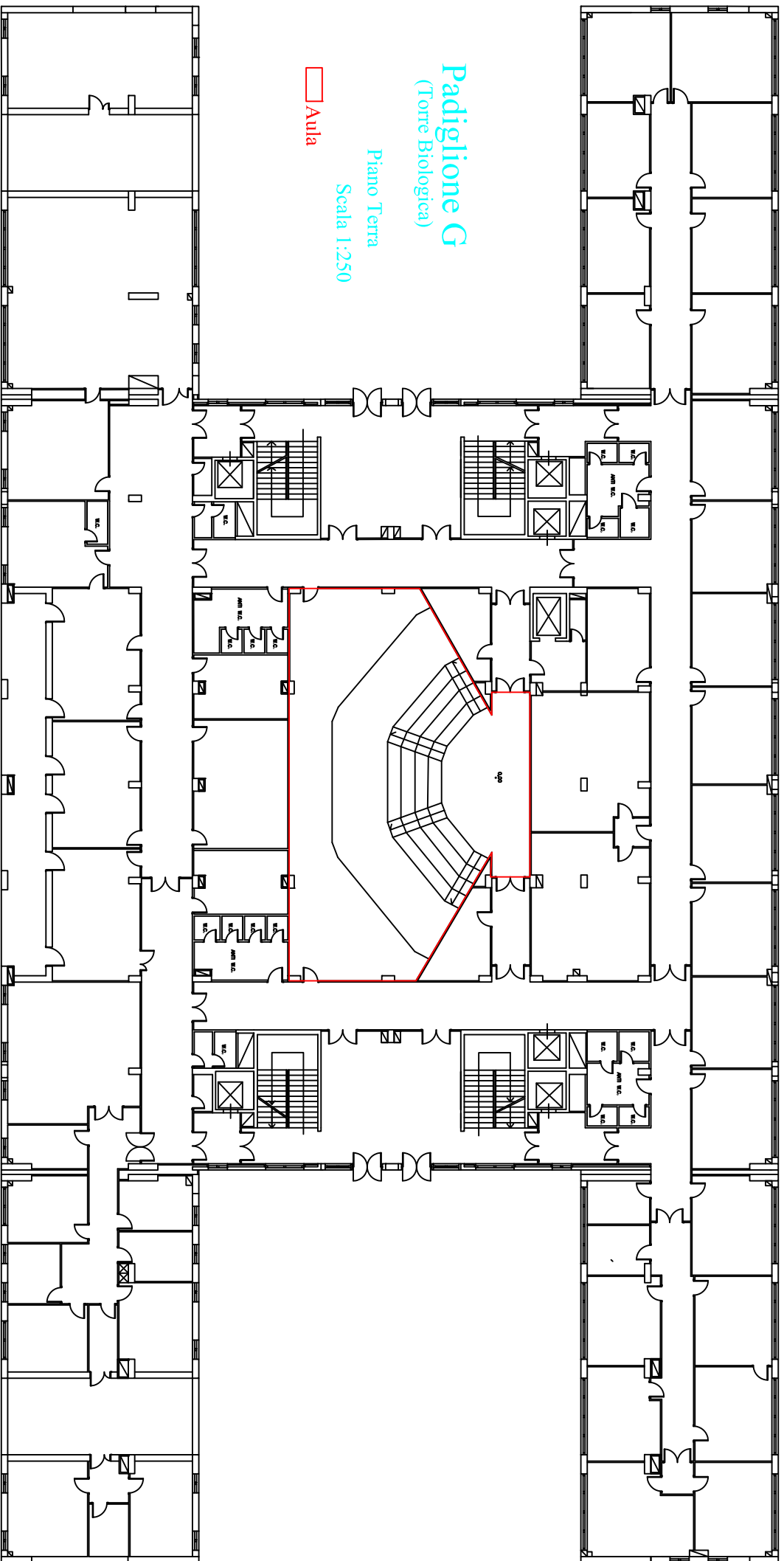
# Padiglione G (Torre Biologica)

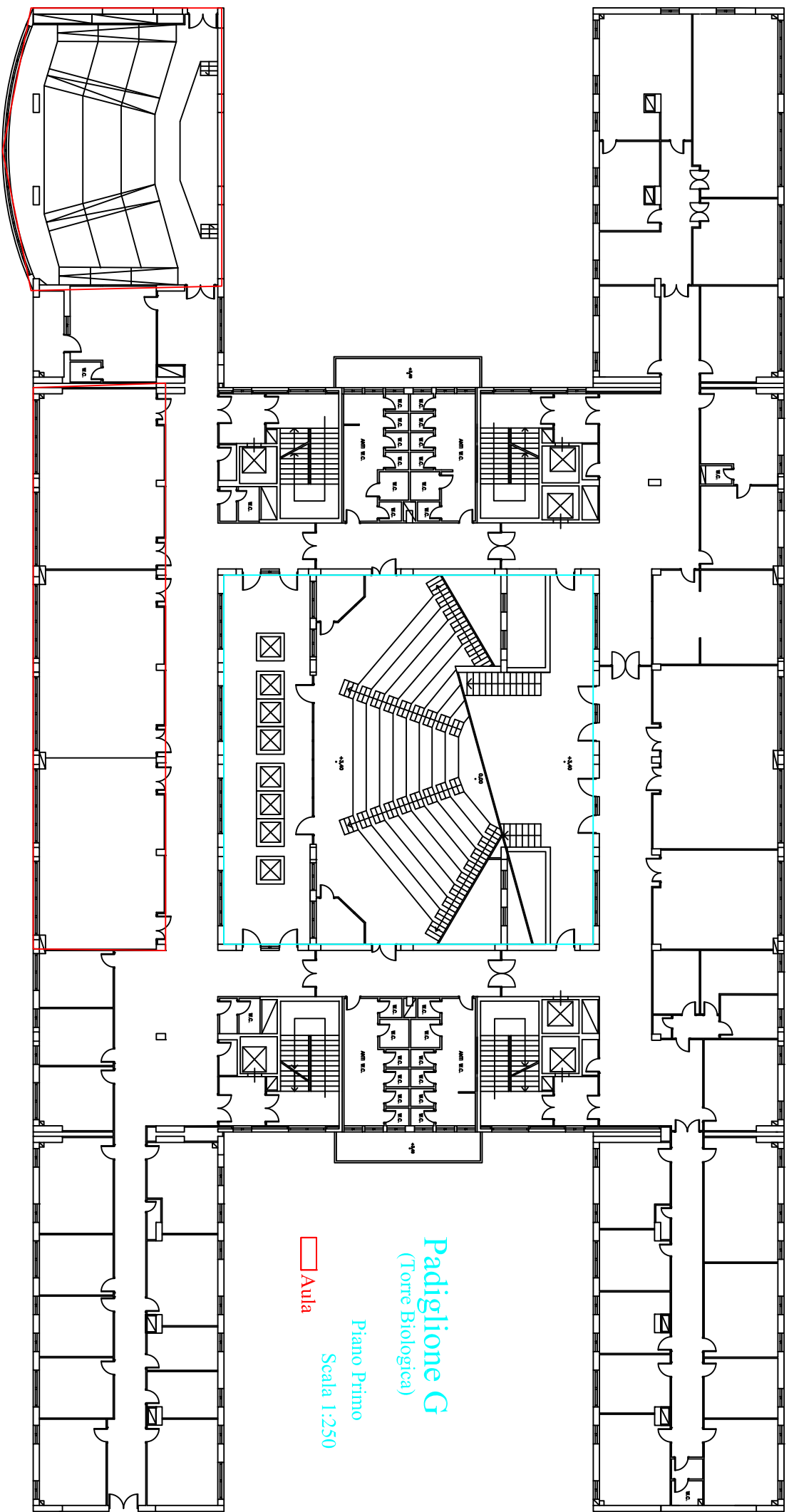
Piano Terra

Scala 1:250



Aula



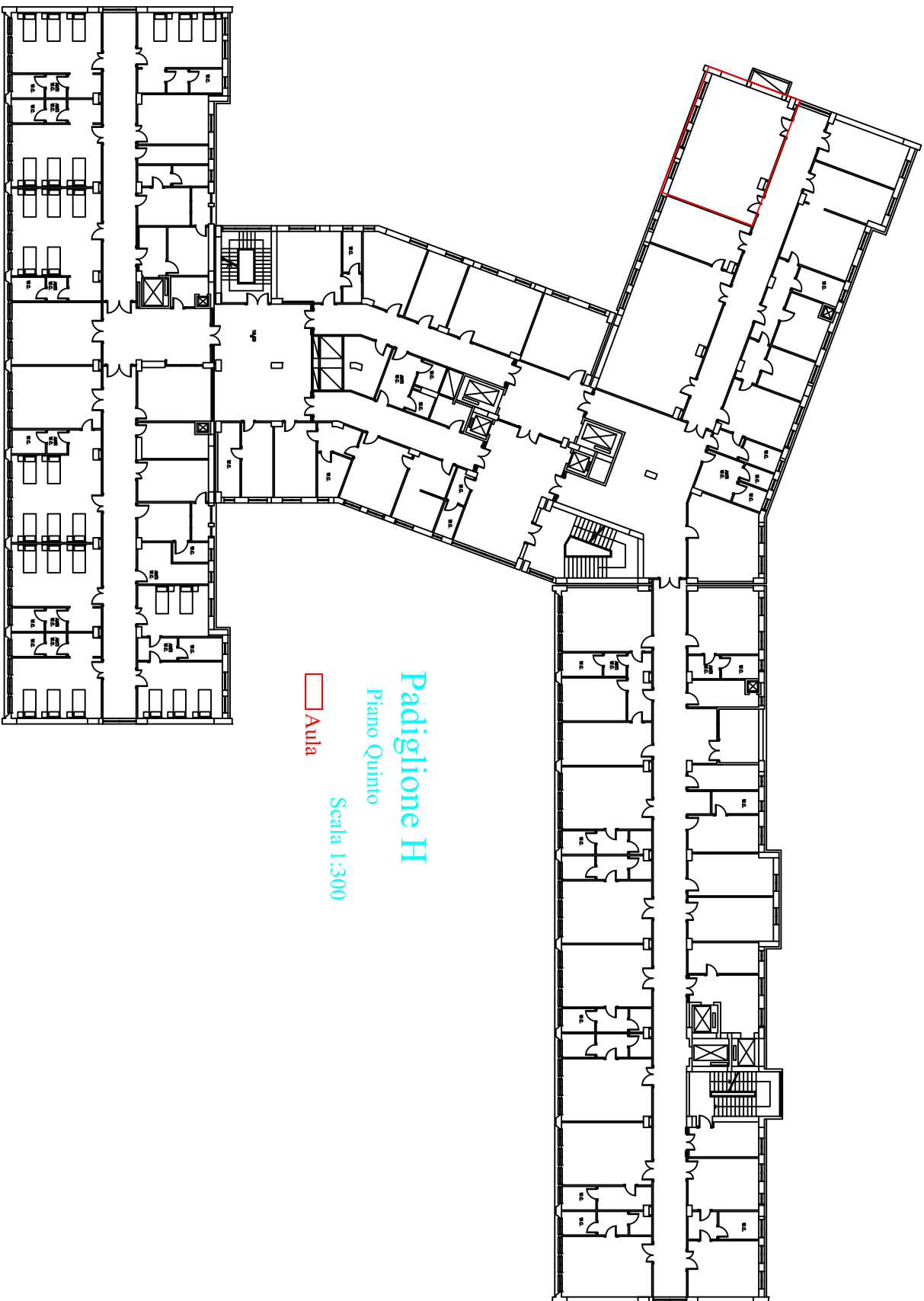


# Padiglione G (Torre Biologica)

Piano Primo

Scala 1:250

 Aula



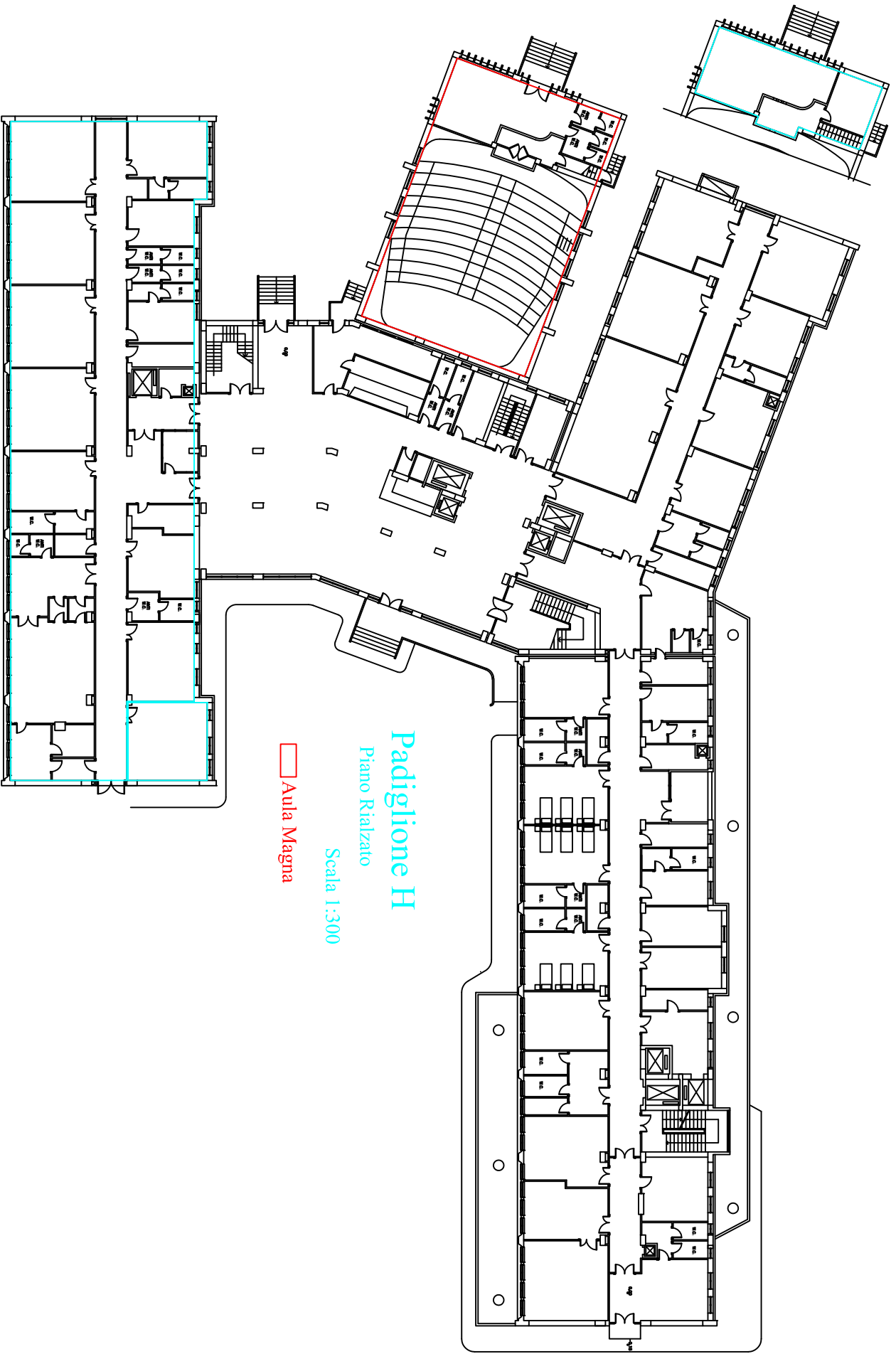
# Padiglione H

Piano Quinto

Scala 1:300



Aula



# Padiglione H

Piano Rialzato

Scala 1:300

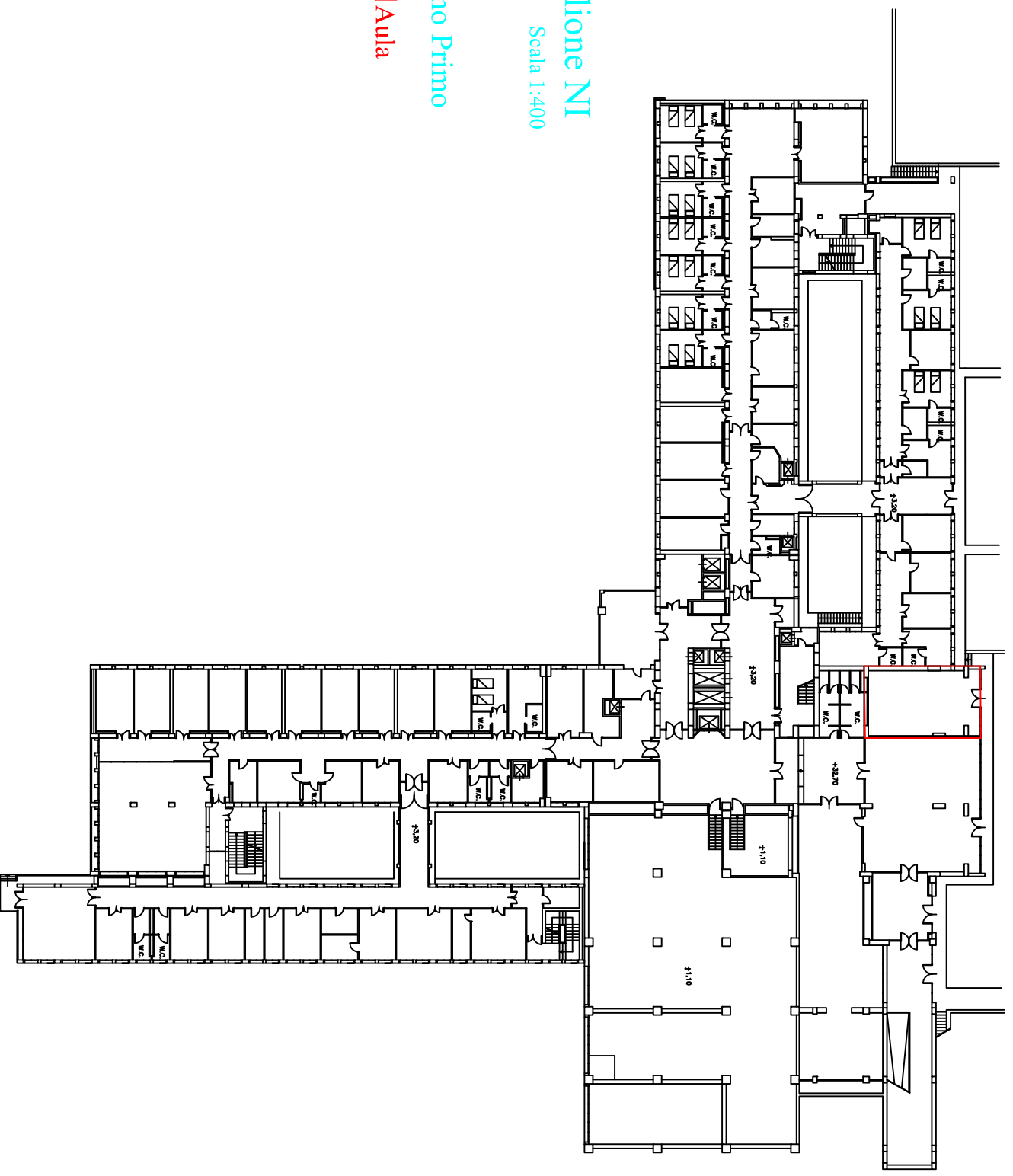
 Aula Magna

# Padiglione NI

Scala 1:400

Piano Primo

 Aula

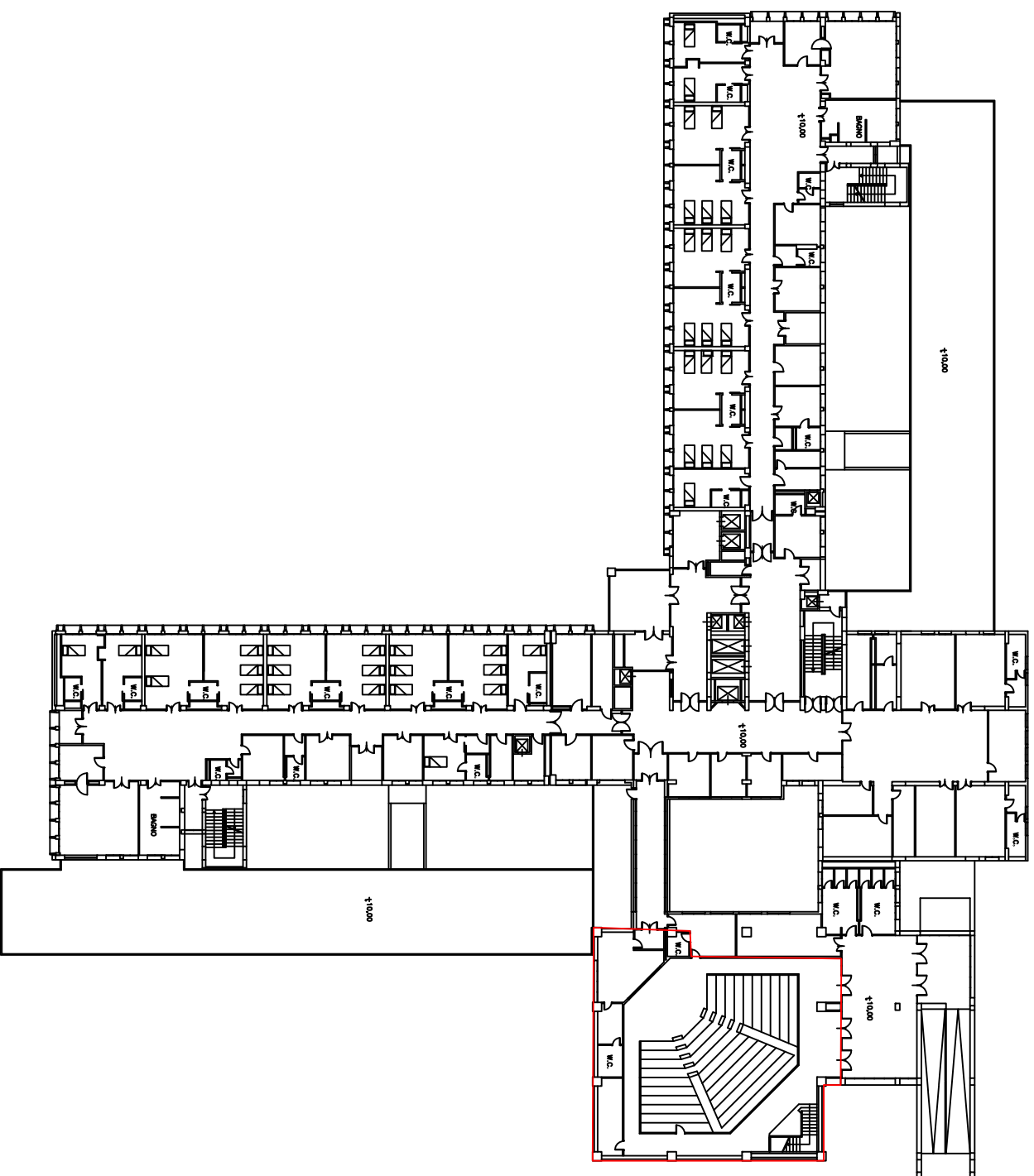


# Padiglione NI

Scala 1:400

Piano Terzo

 Aula

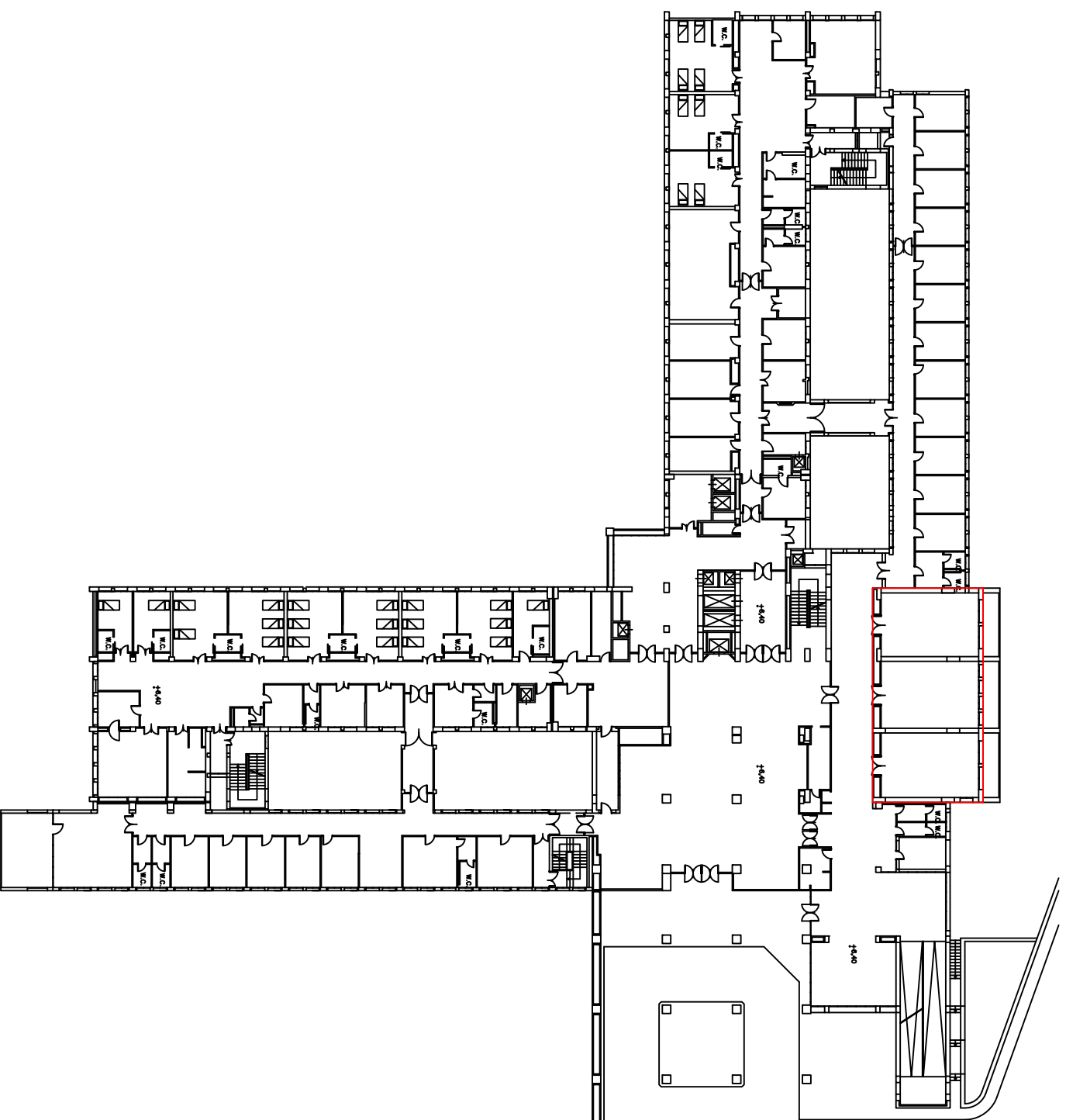


# Padiglione NI

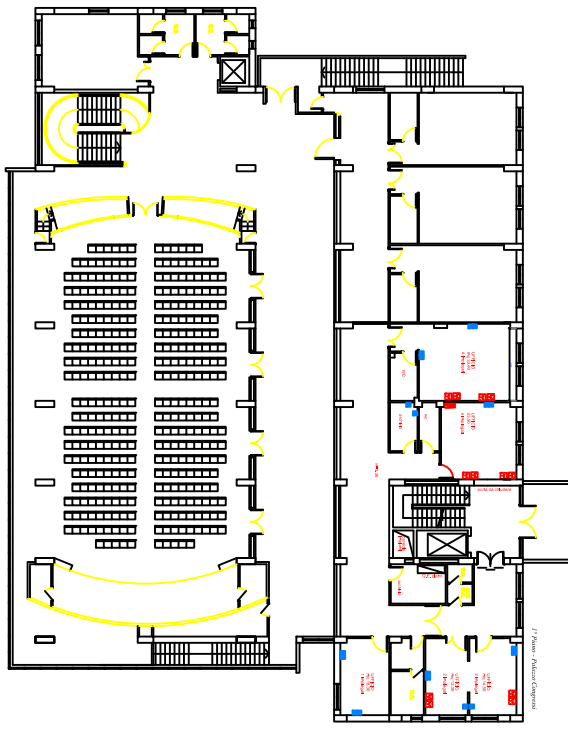
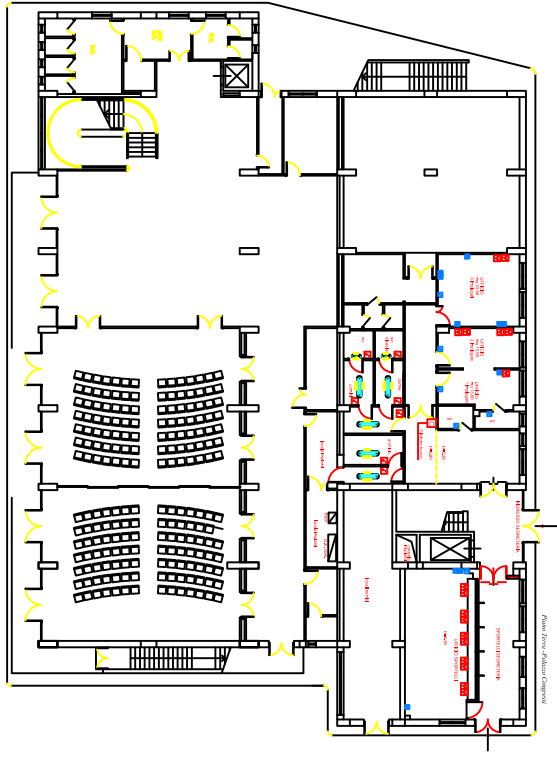
Scala 1:400

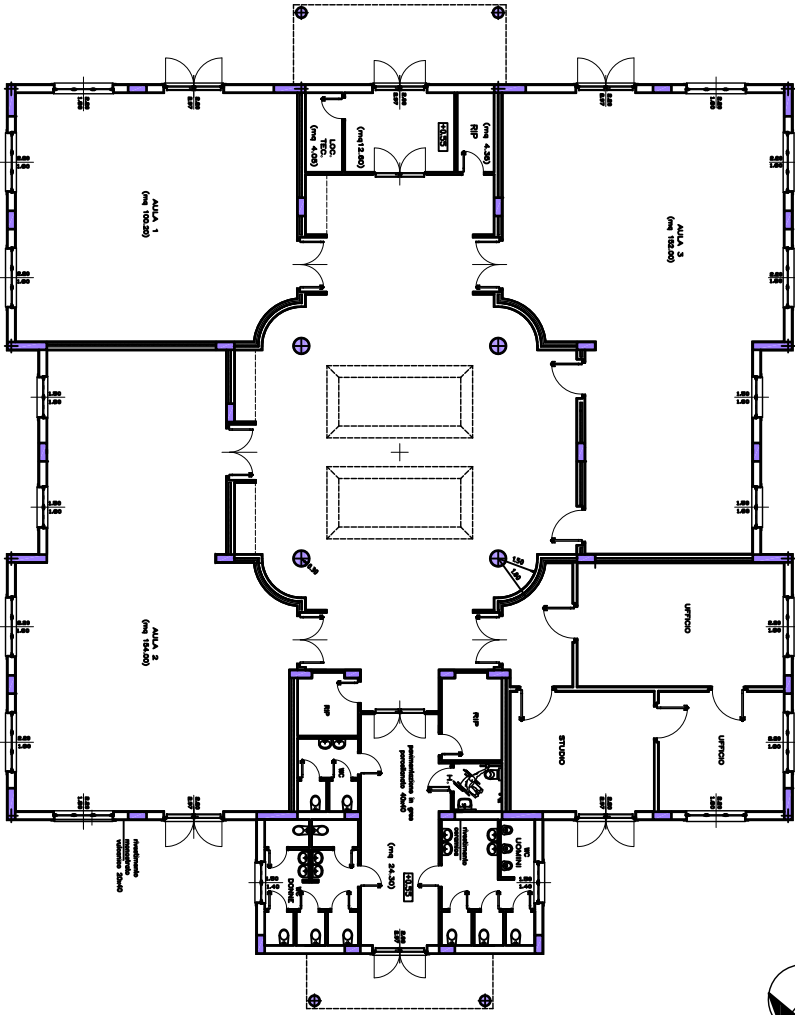
Piano Secondo

□ Aule

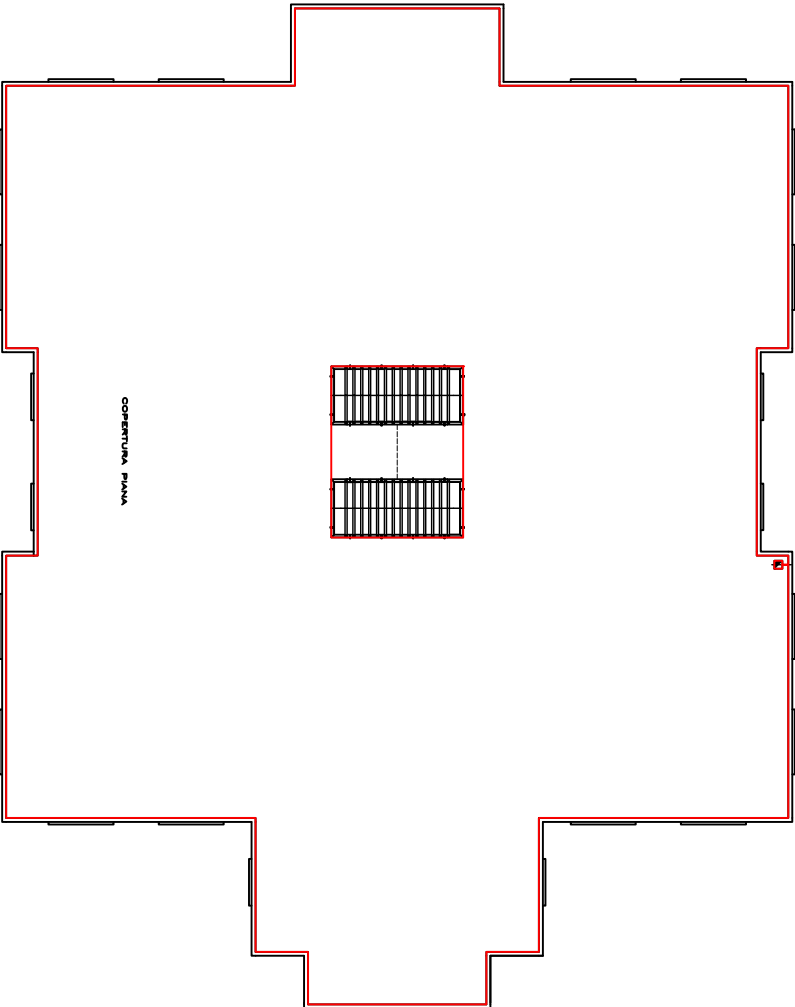








PIANTA PIANO TERRA



PIANTA COPERTURA